

crane blocks & lifting gear



product information

Blocks & Swivels

Fast Reeve Blocks Standard Reeve Blocks Swivels Overhead Crane Blocks
Overhaul Balls Cargo Blocks Offshore Blocks Travelling Blocks Hook Blocks
Crane Blocks Snatch Blocks Oilfield Servicing Blocks Lifting Blocks



Bridge industry Offshore equipment
Dredging industry Mooring systems Cranes



ROPEBLOCK

the quality

Ropeblock

Many of the leading crane and wire rope manufacturers worldwide, are familiar with Ropeblock products and our standard of quality. Many years of specialized engineering and design, have lead to this leading position in the lifting industry. One of the roots of Ropeblock's business is the mobile crane industry. Cost driven, short leadtimes, combined with a high standard of quality have always been the success factors in this industry. Parts of this successful strategy have successfully been implemented in other areas, such as the Marine and Offshore industry, which have now lead to a firm position in these industries. Many of the larger ships and barges now carry a Ropeblock hookblock or loadblock, specifically designed for its respective purpose. Both oil and gas, as well as wind power related offshore crane manufacturers have Ropeblock as their preferred block and swivel supplier.

Our range of blocks and swivels are distributed either directly from our main plant in Oldenzaal, The Netherlands, or through one of our distributing partners in all parts of the world. **Contact us for a safe and well-engineered solution.**



ROPEBLOCK

the quality

Ropeblock, your partner for standard and custom designed blocks & swivels

Research and design

Ropeblock's engineering department is continuously researching the limits and limitations of their block and swivel designs, the material usage, special customers requirements etc. These extensive studies have led to industry leading designs backed up by several type- and design approvals recognized by many renowned classification societies.

Testing

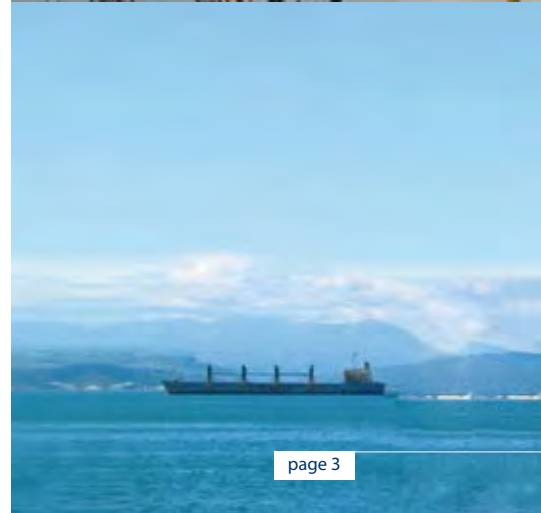
All blocks and swivels can be proof loaded in accordance with the Ropeblock testing program, this implies testing according the ILO standard. Higher proof loads or special request from classification societies are possible. In house access to a vertical socket test bed, as well as a horizontal general-purpose test bed is available to ensure fast reaction time.

Traceability

Ropeblock is able to offer full traceability on its blocks and swivels. This means that all used materials may be traced back to heat numbers of the respective parts. In addition to this, we can offer survey and witness by all classification societies, ranging from full product certification to witness of the applicable proofload.

Quality

The Quality Management System of Ropeblock has been certified in accordance with ISO 9001:2008. This, together with a dedicated team of QA/QC professionals, ensures a consistent quality of product and service.





Certificates and documents

Upon request, all blocks and swivels can be supplied with any of the following documents:

- Declaration of compliance according to EN 10204-2.1, containing:
 - Safe Working Load (SWL)
 - Weight
 - Order number
- Manufacturer test certificate according to ILO convention No. 152
- Material certificates according to EN 10204-3.1 or EN 10204-3.2
- Non Destructive Examination (NDE) reports
- Declaration of Approval, Inspection and/or Testing by members of International Association of Classification Societies (IACS).



Finish

Standard blocks and swivels are finished with a Ropeblock standard coating, which consists of 2 layers. Multilayer Offshore and Marine coatings are also available in any available color. Our in house conditioned paint shop incorporates state-of-the-art equipment for a perfect finish.

Stock

Our unparalleled modular design strategy and keeping stock of most long-lead items, ensures fast reaction time and short lead times. In addition to this, our global distribution network enables customers world-wide, fast access to Ropeblock products.

Special requirements

Our engineers are ready to work on any special requirements you may have. Advanced 3D CAD and FEM techniques will help to decrease the time to market of new innovative designs. Visit our website www.ropeblock.com for more details, or contact your sales representative directly.

Blocks & Swivels

Ropeblock has a wide range of blocks and related lifting products such as swivels, overhaulballs and lifting beams. Our line of standard- and fast reeve blocks are preferred by many OEM crane manufacturers as well as crane end-users. Besides these standard lines of blocks, our custom swivels and hook blocks, suitable for offshore, marine and subsea use are renowned for their quality, safety and durability.



Standard Reeve Blocks

Range from 8 – 250 ton. High tensile side plates, Compact and multipurpose design. Swinging hook suspension for swiveling hook.



Fast Reeve Blocks

Range from 8 – 250 ton. Fast reeving without removing the socket from the wire rope. High tensile side plates with integrated handgrips for positioning and stabilizing before catching load. Compact and multipurpose design. Swinging hook suspension for swiveling hook.



Swivels / Overhaul Balls

Range from 2 – 80 ton. Body in forged steel with becket on top for easy fitting of an open wedge socket or shackle. Hook in forged alloy steel with safety latch / first class thrust bearing, including grease fitting.



Snatch Blocks

Range from 2 – 250 ton. Heavy duty block with a compact design. High tensile side plates. Swinging suspension for swiveling topconnection.



Sheaves

Available in many different types of material, such as nylon and steel, and can be cast, welded and forged. Other parameters such as groove angle and hardening are all engineered to meet your specific requirements. Used in our full line of crane- and hook blocks.





Crane blocks & lifting gear



Overhaul
ball



Standard
reeve
block

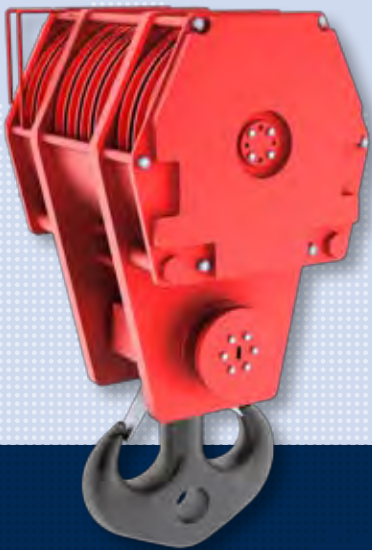


Fast
reeve
block



Overhead
block

Crane blocks & lifting gear



Offshore
crane
block



Ship &
container
block



Custom
block



Warning and application instructions

General

This leaflet contains important information, **do not throw away!** Swivels can be loaded up to the rated WLL. Only fully reeved crane blocks can be loaded up to the rated WLL.

Inspection and Maintenance

Inspection should be carried out weekly or where equipment is used infrequently, each time it is used by the operator.

Examination by a competent and trained person should be carried out monthly on the hook-block or swivel for damage, corrosion, free movement of sheave, swivel and safety latch. Through examination by a competent and trained person should be carried out annually on equipment for mobile and crawler cranes.

Every 4 years, hook and hook nut are to be dismantled, inspected and retested (proof loaded).

Particular attention to be paid to the following:

- Wear in hook, centre pin, becket and threads in hook and nut.
- Play in sheave bushes or bearings.
- Spacer bolts, nuts and lynch pins.
- Check for cracks in welds.
- Condition of safety latch and grease nipples.
- Wear to holes in side plates and becket.

If cracks or heavy gouges appear, the equipment should not be used and qualified opinion should be sought. If grooved and the section reduced by more than 5% the item should be replaced. Repairs should be done by grinding. **No welding** should be carried out unless prior authority is obtained from Ropeblock B.V. If the holes in cross head, side plates, becket, eyes or yaws are enlarged by more than 5%, the part should be replaced. Any parts to be replaced should be purchased from Ropeblock B.V., or manufactured under their instruction. All repairs to be carried out by responsible personnel and great care should be taken in the re-assembly of the equipment and captivating parts i.e., grub screws, lynch pins, etc. Check and refit only correct sizes & threads.



Warning and application instructions

Limitation of use

- Working load limit (WLL) should never be exceeded.
- Hook-blocks should be used in vertical lift only.
- Rigging blocks should be used only as in design specifications. Blocks should not be used for towing unless specifically designed and marked for that purpose.
- Swivels should be used in either vertical or horizontal plain only.
- Horizontal and vertical lead sheaves used only as indicated in description.
- Shock or side loading should not be applied unless equipment is designed for that purpose.
- Load should always be in seat of hook or eye. **Never at point!**

Warning

Where equipment has swivelling and moving parts there are potential safety hazards. Care should be taken when working with or repairing such equipment. If used incorrectly breakage could occur inflicting injury or death. **When equipment is in use do not put hands: between sheaves, side plates and guards. In area of becket, hook, hook nut and cross head.**

Take great care to avoid clothing becoming trapped. Repair and reeving should be carried out by trained personnel only. Power should be switched off before operations are carried out. Work should only take place when equipment is seated on a firm surface.

Lubrication

As a general rule sheaves, cross heads, bearings and bodies should be greased through nipples where positioned:

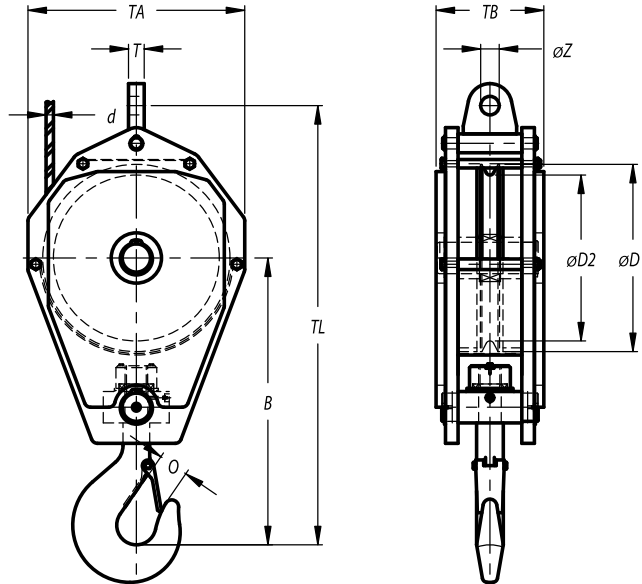
- Re-lubrication should be done every month or 250 hours.
- Heavy duty or high performance equipment should receive re-lubrication weekly.





Standard Reeve Crane Blocks

1 sheave



| Model Nr. | WLL (Mtons) | For wire $\varnothing d$ | Dimensions (mm) | | | | | | | | | Weight (kg) |
|--------------|-------------|--------------------------|-----------------|-----|------|----|-----|-----|------|----|----|-------------|
| | | | D1 | D2 | B | O | TA | TB | TL | T | Z | |
| SRB 250.1.8 | 8 | 11-12 | 280 | 250 | 460 | 49 | 360 | 195 | 730 | 22 | 27 | 100 |
| SRB 285.1.10 | 10 | 13-14 | 320 | 285 | 550 | 55 | 400 | 195 | 850 | 28 | 32 | 125 |
| SRB 320.1.12 | 12 | 15-16 | 365 | 320 | 590 | 55 | 450 | 215 | 915 | 28 | 32 | 170 |
| SRB 355.1.16 | 16 | 17-18 | 410 | 355 | 665 | 59 | 500 | 215 | 1005 | 35 | 37 | 210 |
| SRB 400.1.20 | 20 | 19-20 | 460 | 400 | 740 | 69 | 570 | 230 | 1120 | 40 | 43 | 250 |
| SRB 450.1.25 | 25 | 21-22 | 515 | 450 | 770 | 69 | 600 | 230 | 1180 | 40 | 43 | 300 |
| SRB 520.1.32 | 32 | 24-26 | 595 | 520 | 900 | 76 | 700 | 230 | 1365 | 45 | 52 | 400 |
| SRB 570.1.40 | 40 | 28-29 | 650 | 570 | 975 | 84 | 750 | 313 | 1515 | 50 | 59 | 600 |
| SRB 630.1.50 | 50 | 30-32 | 720 | 630 | 1025 | 97 | 825 | 333 | 1495 | 60 | 65 | 850 |

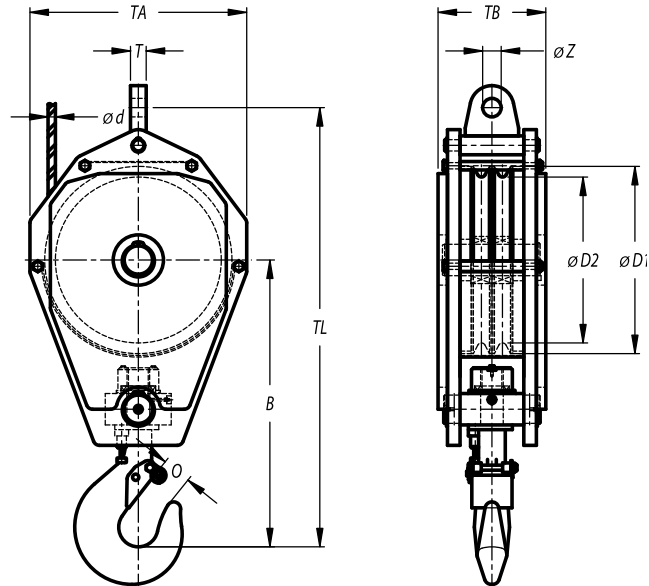
Minimum Ultimate Strength = 4 x WLL.

Standard fitted with cylindrical roller bearing and becket.
 Standard painted in yellow (no striping).
 Standard sheaves of reeve blocks can be adjusted to other wire rope diameters.
 Third party testing with certification available upon request.

Can also be delivered with:

Standard Reeve Crane Blocks

2 sheaves



| Model Nr. | WLL (Mtons) | For wire Ø d | Dimensions (mm) | | | | | | | | | Weight (kg) |
|--------------|-------------|--------------|-----------------|-----|------|-----|-----|-----|------|----|----|-------------|
| | | | D1 | D2 | B | O | TA | TB | TL | T | Z | |
| SRB 260.2.16 | 16 | 11-12 | 300 | 260 | 575 | 59 | 400 | 165 | 860 | 28 | 32 | 130 |
| SRB 285.2.16 | 16 | 15-16 | 320 | 285 | 585 | 59 | 400 | 165 | 885 | 28 | 32 | 130 |
| SRB 285.2.20 | 20 | 15-16 | 320 | 285 | 660 | 69 | 400 | 165 | 960 | 28 | 32 | 130 |
| SRB 285.2.20 | 20 | 17-19 | 320 | 285 | 660 | 69 | 400 | 165 | 960 | 28 | 32 | 150 |
| SRB 320.2.20 | 20 | 15-16 | 365 | 320 | 690 | 69 | 450 | 180 | 1115 | 28 | 32 | 160 |
| SRB 355.2.29 | 29 | 17-19 | 410 | 355 | 760 | 69 | 500 | 250 | 1100 | 35 | 37 | 250 |
| SRB 400.2.20 | 20 | 24-26 | 460 | 400 | 825 | 69 | 570 | 180 | 1180 | 45 | 52 | 180 |
| SRB 400.2.25 | 25 | 24-26 | 460 | 400 | 825 | 69 | 570 | 180 | 1205 | 45 | 52 | 200 |
| SRB 400.2.29 | 29 | 20-22 | 460 | 400 | 750 | 69 | 570 | 240 | 1130 | 40 | 43 | 320 |
| SRB 450.2.30 | 30 | 24-26 | 515 | 450 | 850 | 69 | 605 | 220 | 1275 | 45 | 52 | 300 |
| SRB 450.2.50 | 50 | 24-26 | 515 | 450 | 850 | 84 | 605 | 325 | 1275 | 45 | 52 | 550 |
| SRB 520.2.63 | 63 | 27-28 | 596 | 528 | 1085 | 97 | 710 | 405 | 1565 | 50 | 59 | 980 |
| SRB 520.2.80 | 80 | 27-28 | 596 | 528 | 1150 | 110 | 710 | 440 | 1610 | 50 | 59 | 1000 |

Minimum Ultimate Strength = 4 x WLL.

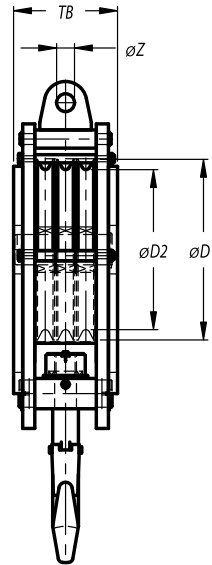
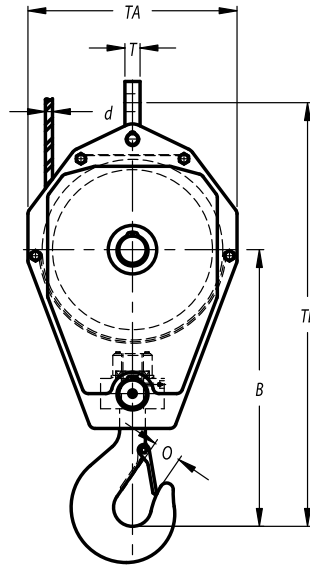
Standard fitted with cylindrical roller bearing and becket.
 Standard painted in yellow (no striping).
 Standard sheaves of reeve blocks can be adjusted to other wire rope diameters.
 Third party testing with certification available upon request.

Can also be delivered with: 



Standard Reeve Crane Blocks

3 sheaves



| Model Nr. | WLL (Mtons) | For wire $\varnothing d$ | Dimensions (mm) | | | | | | | | | Weight (kg) |
|---------------|-------------|--------------------------|-----------------|-----|------|-----|-----|-----|------|----|----|-------------|
| | | | D1 | D2 | B | O | TA | TB | TL | T | Z | |
| SRB 250.3.16 | 16 | 11-12 | 280 | 250 | 640 | 59 | 360 | 220 | 910 | 22 | 27 | 175 |
| SRB 285.3.20 | 20 | 13-14 | 320 | 285 | 700 | 69 | 400 | 230 | 995 | 28 | 32 | 200 |
| SRB 320.3.25 | 25 | 15-16 | 365 | 320 | 725 | 69 | 450 | 230 | 1045 | 28 | 32 | 250 |
| SRB 355.3.32 | 32 | 17-18 | 410 | 355 | 820 | 76 | 500 | 250 | 1160 | 35 | 37 | 310 |
| SRB 400.3.40 | 40 | 19-20 | 460 | 400 | 940 | 84 | 570 | 292 | 1320 | 40 | 43 | 460 |
| SRB 450.3.50 | 50 | 21-22 | 515 | 450 | 945 | 97 | 600 | 333 | 1355 | 40 | 43 | 600 |
| SRB 520.3.63 | 63 | 24-26 | 595 | 520 | 980 | 97 | 700 | 333 | 1445 | 45 | 52 | 850 |
| SRB 570.3.80 | 80 | 28-29 | 650 | 570 | 1195 | 110 | 750 | 372 | 1615 | 50 | 59 | 1100 |
| SRB 630.3.100 | 100 | 30-32 | 720 | 630 | 1300 | 132 | 825 | 392 | 1770 | 60 | 65 | 1400 |

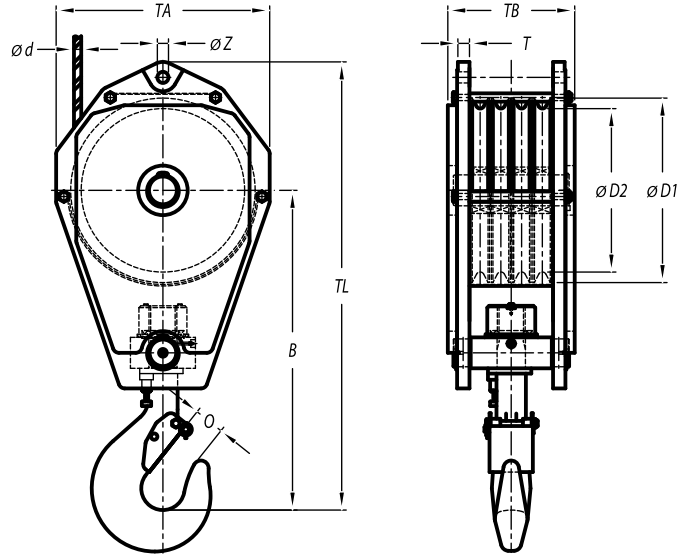
Minimum Ultimate Strength = 4 x WLL.

Standard fitted with cylindrical roller bearing and becket.
 Standard painted in yellow (no striping).
 Standard sheaves of reeve blocks can be adjusted to other wire rope diameters.
 Third party testing with certification available upon request.

Can also be delivered with:

Standard Reeve Crane Blocks

4 sheaves



| Model Nr. | WLL (Mtons) | For wire ϕd | Dimensions (mm) | | | | | | | | | Weight (kg) |
|---------------|-------------|-------------------|-----------------|-----|------|-----|-----|-----|------|----|----|-------------|
| | | | D1 | D2 | B | O | TA | TB | TL | T | Z | |
| SRB 285.4.35 | 35 | 15-16 | 320 | 285 | 670 | 75 | 400 | 312 | 980 | 28 | 32 | 260 |
| SRB 355.4.50 | 50 | 17-19 | 410 | 355 | 835 | 84 | 500 | 363 | 1175 | 25 | 37 | 475 |
| SRB 355.4.50 | 50 | 20-22 | 410 | 355 | 835 | 84 | 500 | 363 | 1185 | 40 | 43 | 475 |
| SRB 400.4.63 | 63 | 20-22 | 465 | 400 | 915 | 97 | 570 | 350 | 1295 | 40 | 43 | 525 |
| SRB 450.4.63 | 63 | 20-22 | 515 | 450 | 950 | 97 | 600 | 400 | 1360 | 40 | 43 | 725 |
| SRB 450.4.80 | 80 | 24-26 | 515 | 450 | 1065 | 110 | 600 | 517 | 1455 | 40 | 52 | 960 |
| SRB 520.4.100 | 100 | 27-28 | 596 | 528 | 1290 | 132 | 710 | 462 | 1765 | 40 | 59 | 1250 |

Minimum Ultimate Strength = 4 x WLL.

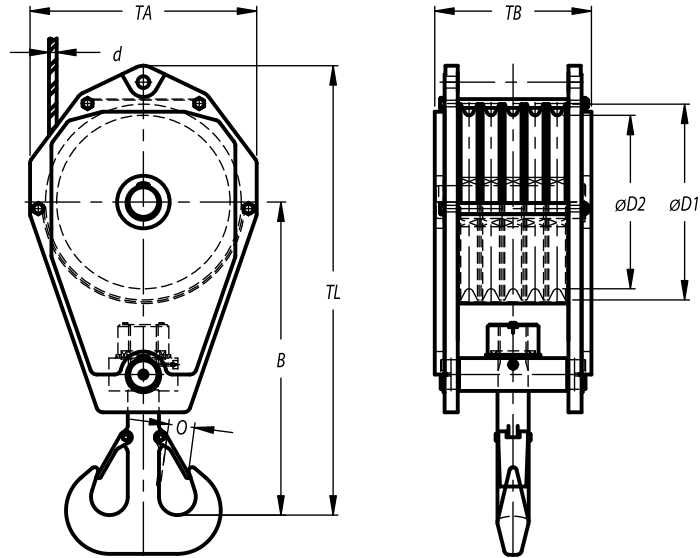
Standard fitted with cylindrical roller bearing and becket.
 Standard painted in yellow (no striping).
 Standard sheaves of reeve blocks can be adjusted to other wire rope diameters.
 Third party testing with certification available upon request.

Can also be delivered with: 



Standard Reeve Crane Blocks


5 sheaves



| Model Nr. | WLL (Mtons) | For wire $\varnothing d$ | Dimensions (mm) | | | | | | | | | Weight (kg) |
|---------------|-------------|--------------------------|-----------------|-----|------|-----|-----|-----|------|----|----|-------------|
| | | | D1 | D2 | B | O | TA | TB | TL | T | Z | |
| SRB 250.5.25 | 25 | 11-12 | 280 | 250 | 650 | 47 | 360 | 310 | 850 | 22 | 27 | 250 |
| SRB 285.5.32 | 32 | 13-14 | 320 | 285 | 725 | 57 | 400 | 310 | 950 | 28 | 32 | 300 |
| SRB 320.5.40 | 40 | 15-16 | 365 | 320 | 800 | 60 | 450 | 440 | 1035 | 28 | 32 | 420 |
| SRB 355.5.50 | 50 | 17-18 | 410 | 355 | 840 | 60 | 500 | 440 | 1100 | 35 | 37 | 500 |
| SRB 400.5.63 | 63 | 19-20 | 460 | 400 | 880 | 63 | 570 | 450 | 1175 | 40 | 43 | 620 |
| SRB 450.5.80 | 80 | 21-22 | 515 | 450 | 1100 | 73 | 600 | 450 | 1425 | 40 | 43 | 750 |
| SRB 520.5.100 | 100 | 24-26 | 595 | 520 | 1250 | 87 | 680 | 450 | 1600 | 45 | 52 | 900 |
| SRB 570.5.125 | 125 | 28-29 | 650 | 570 | 1350 | 108 | 750 | 575 | 1750 | 50 | 59 | 1250 |
| SRB 630.5.160 | 160 | 30-32 | 720 | 630 | 1540 | 112 | 850 | 575 | 2000 | 60 | 65 | 1600 |

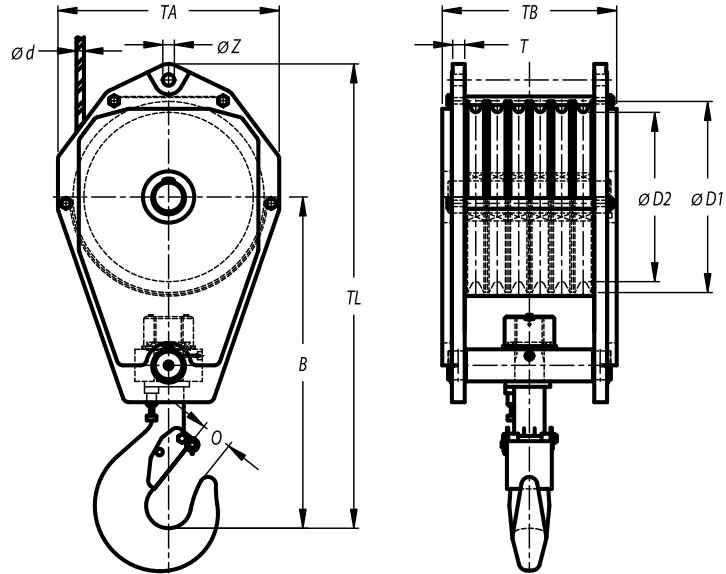
Minimum Ultimate Strength = 4 x WLL.

Standard fitted with cylindrical roller bearing and becket.
 Standard painted in yellow (no striping).
 Standard sheaves of reeve blocks can be adjusted to other wire rope diameters.
 Third party testing with certification available upon request.

Can also be delivered with: 

Standard Reeve Crane Blocks

6 sheaves



| Model Nr. | WLL (Mtons) | For wire $\varnothing d$ | Dimensions (mm) | | | | | | | | | Weight (kg) |
|---------------|-------------|--------------------------|-----------------|-----|------|-----|-----|-----|------|----|----|-------------|
| | | | D1 | D2 | B | O | TA | TB | TL | T | Z | |
| SRB 400.6.72 | 72 | 17-19 | 460 | 400 | 1000 | 110 | 570 | 397 | 1350 | 30 | 37 | 650 |
| SRB 450.6.80 | 80 | 20-22 | 515 | 450 | 1090 | 110 | 600 | 612 | 1480 | 40 | 43 | 1200 |
| SRB 520.6.125 | 125 | 24-26 | 596 | 528 | 1250 | 137 | 710 | 652 | 1690 | 45 | 52 | 1750 |
| SRB 520.6.160 | 160 | 24-26 | 596 | 528 | 1325 | 167 | 710 | 842 | 1825 | 45 | 52 | 2970 |
| SRB 520.6.200 | 200 | 27-28 | 596 | 528 | 1525 | 188 | 710 | 882 | 2035 | 50 | 59 | 3680 |

Minimum Ultimate Strength = 4 x WLL.

Standard fitted with cylindrical roller bearing and becket.
 Standard painted in yellow (no striping).
 Standard sheaves of reeve blocks can be adjusted to other wire rope diameters.
 Third party testing with certification available upon request.

Can also be delivered with: 



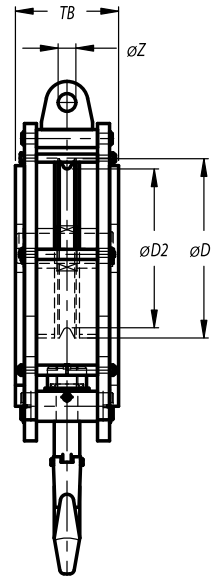
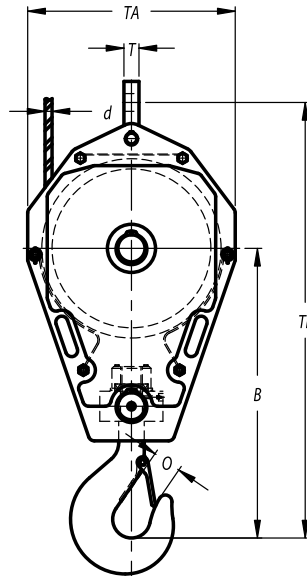
More Standard Reeve Blocks

Looking for a custom solution for your lifting specific application; our dedicated group of in-house engineers will work hard to find an adequate and qualified one!

Contact us and become 'Hooked on Ropeblock'

Fast Reeve Crane Blocks


1 sheave



| Model Nr. | WLL (Mtons) | For wire ϕd | Dimensions (mm) | | | | | | | | | Weight (kg) |
|--------------|-------------|-------------------|-----------------|-----|------|----|-----|-----|------|----|----|-------------|
| | | | D1 | D2 | B | O | TA | TB | TL | T | Z | |
| FRB 250.1.8 | 8 | 11-12 | 280 | 250 | 560 | 49 | 360 | 195 | 830 | 22 | 27 | 115 |
| FRB 285.1.10 | 10 | 13-14 | 320 | 285 | 600 | 55 | 400 | 195 | 900 | 28 | 32 | 150 |
| FRB 320.1.12 | 12 | 15-16 | 365 | 320 | 680 | 55 | 450 | 215 | 1005 | 28 | 32 | 200 |
| FRB 355.1.16 | 16 | 17-18 | 410 | 355 | 730 | 59 | 500 | 215 | 1070 | 35 | 37 | 250 |
| FRB 400.1.20 | 20 | 19-20 | 460 | 400 | 820 | 69 | 570 | 215 | 1200 | 40 | 43 | 300 |
| FRB 450.1.25 | 25 | 21-22 | 515 | 450 | 895 | 69 | 600 | 230 | 1305 | 40 | 43 | 375 |
| FRB 520.1.32 | 32 | 24-26 | 595 | 520 | 1000 | 76 | 700 | 230 | 1455 | 45 | 52 | 450 |
| FRB 570.1.40 | 40 | 28-29 | 650 | 570 | 1150 | 84 | 750 | 335 | 1625 | 50 | 59 | 700 |
| FRB 630.1.50 | 50 | 30-32 | 720 | 630 | 1220 | 97 | 850 | 335 | 1750 | 60 | 65 | 950 |

Minimum Ultimate Strength = 4 x WLL.

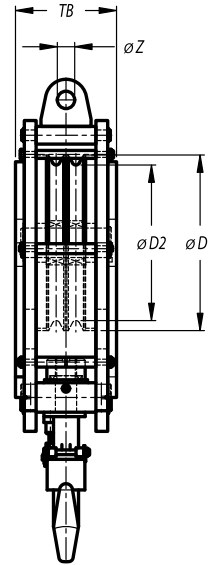
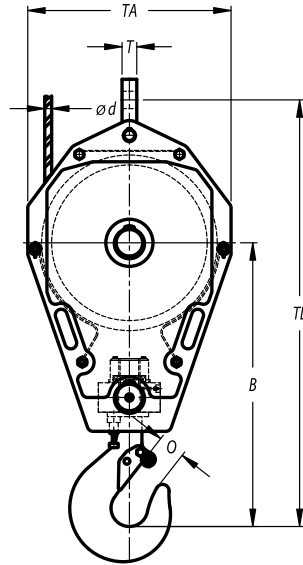
Standard fitted with cylindrical roller bearing and becket.
 Standard painted in yellow with black stripes.
 Standard sheaves of reeve blocks can be adjusted to other wire rope diameters.
 Third party testing with certification available upon request.

Can also be delivered with: 



Fast Reeve Crane Blocks

2 sheaves



| Model Nr. | WLL (Mtons) | For wire $\varnothing d$ | Dimensions (mm) | | | | | | | | | Weight (kg) |
|--------------|-------------|--------------------------|-----------------|-----|------|-----|-----|-----|------|----|----|-------------|
| | | | D1 | D2 | B | O | TA | TB | TL | T | Z | |
| FRB 260.2.16 | 16 | 12-14 | 300 | 260 | 650 | 59 | 400 | 165 | 935 | 28 | 32 | 120 |
| FRB 320.2.20 | 20 | 15-16 | 365 | 320 | 765 | 69 | 450 | 180 | 1085 | 28 | 32 | 160 |
| FRB 355.2.29 | 29 | 17-19 | 410 | 355 | 860 | 69 | 500 | 250 | 1200 | 35 | 37 | 275 |
| FRB 400.2.20 | 20 | 24-26 | 460 | 400 | 900 | 69 | 570 | 180 | 1255 | 45 | 52 | 200 |
| FRB 400.2.25 | 25 | 24-26 | 460 | 400 | 900 | 69 | 570 | 180 | 1280 | 45 | 52 | 220 |
| FRB 400.2.29 | 29 | 20-22 | 460 | 400 | 875 | 69 | 570 | 240 | 1255 | 40 | 43 | 340 |
| FRB 450.2.30 | 30 | 24-26 | 515 | 450 | 925 | 69 | 605 | 220 | 1350 | 45 | 52 | 315 |
| FRB 450.2.50 | 50 | 24-26 | 515 | 450 | 925 | 84 | 605 | 395 | 1350 | 45 | 52 | 725 |
| FRB 520.2.63 | 63 | 27-28 | 596 | 528 | 1160 | 97 | 710 | 405 | 1640 | 50 | 59 | 1000 |
| FRB 520.2.80 | 80 | 27-28 | 596 | 528 | 1200 | 110 | 710 | 440 | 1660 | 50 | 59 | 1050 |

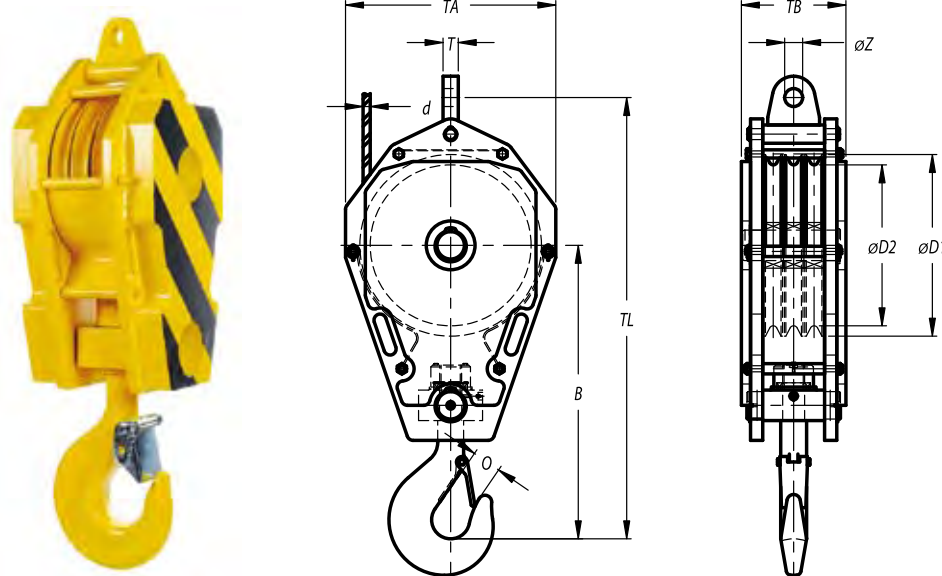
Minimum Ultimate Strength = 4 x WLL.

Standard fitted with cylindrical roller bearing and becket.
 Standard painted in yellow with black stripes.
 Standard sheaves of reeve blocks can be adjusted to other wire rope diameters.
 Third party testing with certification available upon request.

Can also be delivered with:

Fast Reeve Crane Blocks

3 sheaves



| Model Nr. | WLL (Mtons) | For wire ø d | Dimensions (mm) | | | | | | | | | Weight (kg) |
|---------------|----------------|-----------------|-----------------|-----|------|-----|-----|-----|------|----|----|----------------|
| | | | D1 | D2 | B | O | TA | TB | TL | T | Z | |
| FRB 250.3.16 | 16 | 11-12 | 280 | 250 | 700 | 59 | 360 | 220 | 975 | 22 | 27 | 200 |
| FRB 285.3.20 | 20 | 13-14 | 320 | 285 | 770 | 69 | 400 | 220 | 1075 | 28 | 32 | 230 |
| FRB 320.3.25 | 25 | 15-16 | 365 | 320 | 780 | 69 | 450 | 220 | 1100 | 28 | 32 | 290 |
| FRB 355.3.32 | 32 | 17-18 | 410 | 355 | 860 | 76 | 500 | 240 | 1200 | 35 | 37 | 350 |
| FRB 400.3.40 | 40 | 19-20 | 460 | 400 | 950 | 84 | 550 | 310 | 1325 | 40 | 43 | 500 |
| FRB 450.3.50 | 50 | 21-22 | 515 | 450 | 1000 | 97 | 600 | 335 | 1400 | 40 | 43 | 650 |
| FRB 520.3.63 | 63 | 24-26 | 595 | 520 | 1050 | 97 | 680 | 335 | 1500 | 45 | 52 | 900 |
| FRB 570.3.80 | 80 | 28-29 | 650 | 570 | 1350 | 110 | 750 | 370 | 1825 | 50 | 59 | 1300 |
| FRB 630.3.100 | 100 | 30-32 | 720 | 630 | 1550 | 132 | 850 | 370 | 2075 | 60 | 65 | 1600 |

Minimum Ultimate Strength = 4 x WLL.

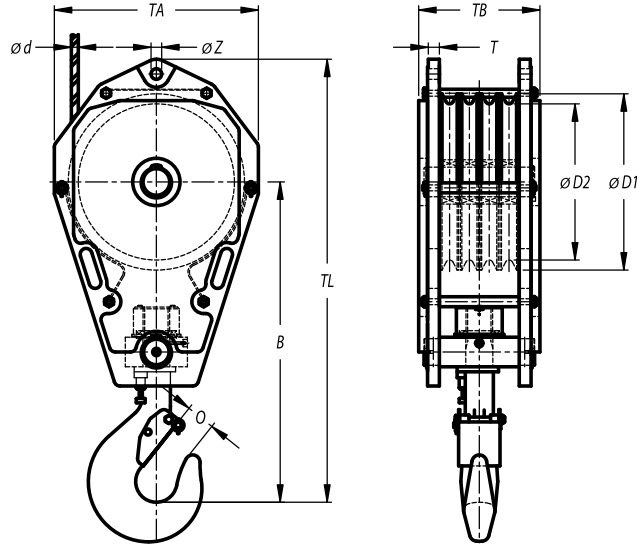
Standard fitted with cylindrical roller bearing and becket.
 Standard painted in yellow with black stripes.
 Standard sheaves of reeve blocks can be adjusted to other wire rope diameters.
 Third party testing with certification available upon request.

Can also be delivered with: 



Fast Reeve Crane Blocks

4 sheaves



| Model Nr. | WLL (Mtons) | For wire $\varnothing d$ | Dimensions (mm) | | | | | | | | | Weight (kg) |
|---------------|-------------|--------------------------|-----------------|-----|------|-----|-----|-----|------|----|----|-------------|
| | | | D1 | D2 | B | O | TA | TB | TL | T | Z | |
| FRB 285.4.35 | 35 | 15-16 | 320 | 285 | 720 | 76 | 400 | 312 | 1030 | 28 | 32 | 275 |
| FRB 355.4.50 | 50 | 17-19 | 410 | 355 | 915 | 84 | 500 | 363 | 1255 | 35 | 37 | 500 |
| FRB 355.4.50 | 50 | 20-22 | 410 | 355 | 915 | 84 | 500 | 363 | 1265 | 40 | 43 | 500 |
| FRB 400.4.63 | 63 | 20-22 | 465 | 400 | 985 | 97 | 570 | 350 | 1365 | 40 | 43 | 550 |
| FRB 450.4.63 | 63 | 20-22 | 515 | 450 | 1025 | 97 | 600 | 400 | 1435 | 40 | 43 | 750 |
| FRB 450.4.80 | 80 | 24-26 | 515 | 450 | 1190 | 110 | 600 | 517 | 1580 | 40 | 52 | 1000 |
| FRB 520.4.100 | 100 | 27-28 | 596 | 528 | 1290 | 132 | 710 | 462 | 1765 | 40 | 59 | 1250 |

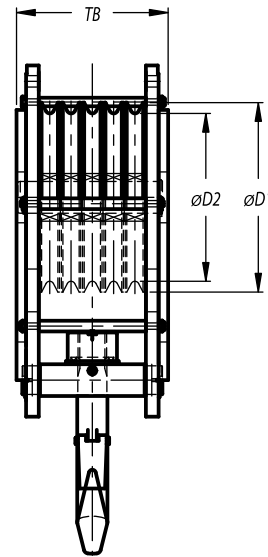
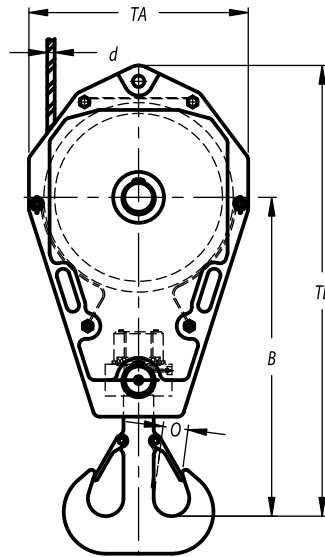
Minimum Ultimate Strength = 4 x WLL.

Standard fitted with cylindrical roller bearing and becket.
 Standard painted in yellow with black stripes.
 Standard sheaves of reeve blocks can be adjusted to other wire rope diameters.
 Third party testing with certification available upon request.

Can also be delivered with: 

Fast Reeve Crane Blocks


5 sheaves



| Model Nr. | WLL (Mtons) | For wire ø d | Dimensions (mm) | | | | | | | | | Weight (kg) |
|---------------|-------------|--------------|-----------------|-----|------|-----|-----|-----|------|----|----|-------------|
| | | | D1 | D2 | B | O | TA | TB | TL | T | Z | |
| FRB 250.5.25 | 25 | 11-12 | 280 | 250 | 780 | 47 | 360 | 310 | 980 | 22 | 27 | 290 |
| FRB 285.5.32 | 32 | 13-14 | 320 | 285 | 850 | 57 | 400 | 310 | 1075 | 28 | 32 | 350 |
| FRB 320.5.40 | 40 | 15-16 | 365 | 320 | 920 | 60 | 450 | 440 | 1150 | 28 | 32 | 475 |
| FRB 355.5.50 | 50 | 17-18 | 410 | 355 | 950 | 60 | 500 | 440 | 1200 | 35 | 37 | 600 |
| FRB 400.5.63 | 63 | 19-20 | 460 | 400 | 1025 | 63 | 550 | 450 | 1325 | 40 | 43 | 700 |
| FRB 450.5.80 | 80 | 21-22 | 515 | 450 | 1250 | 73 | 600 | 450 | 1575 | 40 | 43 | 850 |
| FRB 520.5.100 | 100 | 24-26 | 595 | 520 | 1350 | 87 | 680 | 450 | 1700 | 45 | 52 | 1050 |
| FRB 570.5.125 | 125 | 28-29 | 650 | 570 | 1560 | 108 | 750 | 575 | 1950 | 50 | 59 | 1400 |
| FRB 630.5.160 | 160 | 30-32 | 720 | 630 | 1800 | 112 | 850 | 575 | 2250 | 60 | 65 | 1800 |

Minimum Ultimate Strength = 4 x WLL.

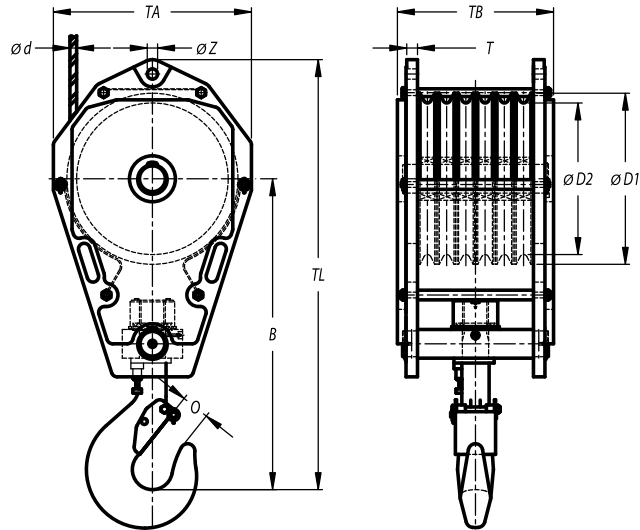
Standard fitted with cylindrical roller bearing and becket.
 Standard painted in yellow with black stripes.
 Standard sheaves of reeve blocks can be adjusted to other wire rope diameters.
 Third party testing with certification available upon request.

Can also be delivered with: 



Fast Reeve Crane Blocks

6 sheaves



| Model Nr. | WLL (Mtons) | For wire ϕd | Dimensions (mm) | | | | | | | | | Weight (kg) |
|---------------|-------------|-------------------|-----------------|-----|------|-----|-----|-----|------|----|----|-------------|
| | | | D1 | D2 | B | O | TA | TB | TL | T | Z | |
| FRB 400.6.72 | 72 | 17-19 | 460 | 400 | 1100 | 110 | 570 | 397 | 1450 | 30 | 37 | 650 |
| FRB 450.6.80 | 80 | 20-22 | 515 | 450 | 1190 | 110 | 600 | 612 | 1580 | 40 | 43 | 1200 |
| FRB 520.6.125 | 125 | 24-26 | 596 | 528 | 1325 | 137 | 710 | 652 | 1765 | 45 | 52 | 1750 |
| FRB 520.6.160 | 160 | 24-26 | 596 | 528 | 1400 | 167 | 710 | 842 | 1900 | 45 | 52 | 2970 |
| FRB 520.6.200 | 200 | 27-28 | 596 | 528 | 1600 | 188 | 710 | 882 | 2110 | 50 | 59 | 3680 |

Minimum Ultimate Strength = 4 x WLL.

Standard fitted with cylindrical roller bearing and becket.
 Standard painted in yellow with black stripes.
 Standard sheaves of reeve blocks can be adjusted to other wire rope diameters.
 Third party testing with certification available upon request.

Can also be delivered with:



More Fast Reeve Blocks

Looking for a custom solution for your lifting specific application; our dedicated group of in-house engineers will work hard to find an adequate and qualified one!

Contact us and become 'Hooked on Ropeblock'

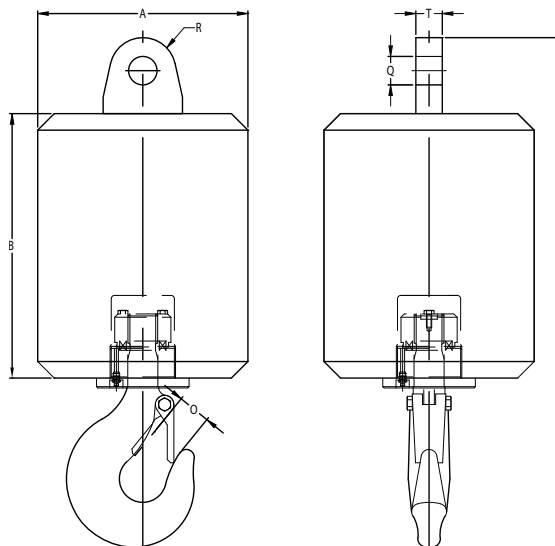
Fast Reeve

SEE OUR WARNINGS AND APPLICATION INSTRUCTIONS

Overhaul Ball



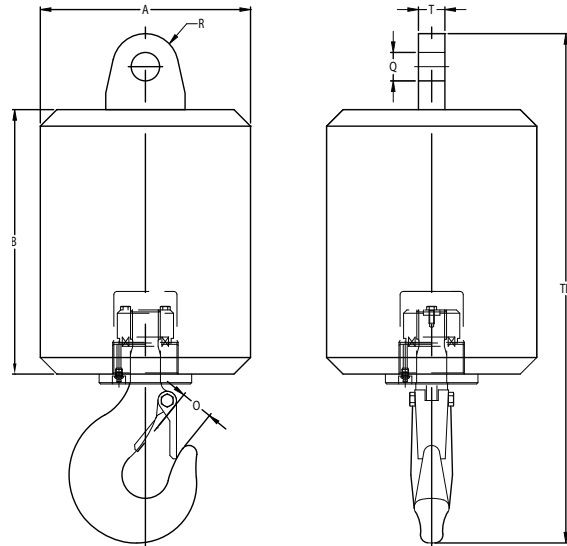
DIN Hook



| Model Nr. | Type | Hook DIN | WLL (Mtons) | Dimensions (mm) | | | | | | | Weight (kg) |
|---------------|----------|----------|-------------|-----------------|-----|----|----|----|----|-----|-------------|
| | | | | A | B | O | Q | R | T | TL | |
| OHB 3,2.20.C | Eye-Hook | 2.5 P | 3,2 | 145 | 145 | 41 | 27 | 30 | 22 | 441 | 20 |
| OHB 3,2.60.C | Eye-Hook | 2.5 P | 3,2 | 200 | 225 | 41 | 27 | 30 | 22 | 521 | 60 |
| OHB 3,2.80.C | Eye-Hook | 2.5 P | 3,2 | 220 | 255 | 41 | 27 | 30 | 22 | 551 | 80 |
| OHB 3,2.100.C | Eye-Hook | 2.5 P | 3,2 | 240 | 275 | 41 | 27 | 30 | 22 | 571 | 100 |
| OHB 5.40.C | Eye-Hook | 2.5 P | 5 | 170 | 190 | 41 | 32 | 35 | 28 | 500 | 40 |
| OHB 5.80.C | Eye-Hook | 2.5 P | 5 | 220 | 255 | 41 | 32 | 35 | 28 | 566 | 80 |
| OHB 5.100.C | Eye-Hook | 2.5 P | 5 | 240 | 275 | 41 | 32 | 35 | 28 | 586 | 100 |
| OHB 5.130.C | Eye-Hook | 2.5 P | 5 | 260 | 310 | 41 | 32 | 35 | 28 | 621 | 130 |
| OHB 6,3.100.C | Eye-Hook | 4 P | 6,3 | 240 | 275 | 49 | 37 | 45 | 35 | 630 | 100 |
| OHB 6,3.130.C | Eye-Hook | 4 P | 6,3 | 260 | 310 | 49 | 37 | 45 | 35 | 665 | 130 |
| OHB 6,3.170.C | Eye-Hook | 4 P | 6,3 | 280 | 340 | 49 | 37 | 45 | 35 | 695 | 170 |
| OHB 8.040.C | Eye-Hook | 4 P | 8 | 170 | 190 | 49 | 37 | 45 | 35 | 556 | 40 |
| OHB 8.130.C | Eye-Hook | 4 P | 8 | 260 | 310 | 49 | 37 | 45 | 35 | 665 | 130 |
| OHB 8.170.C | Eye-Hook | 4 P | 8 | 280 | 340 | 49 | 37 | 45 | 35 | 695 | 170 |
| OHB 8.210.C | Eye-Hook | 4 P | 8 | 300 | 335 | 49 | 37 | 45 | 35 | 735 | 210 |
| OHB 10.045.C | Eye-Hook | 5 P | 10 | 170 | 190 | 55 | 43 | 50 | 40 | 643 | 45 |
| OHB 10.170.C | Eye-Hook | 5 P | 10 | 280 | 340 | 55 | 43 | 50 | 40 | 747 | 170 |
| OHB 10.210.C | Eye-Hook | 5 P | 10 | 300 | 335 | 55 | 43 | 50 | 40 | 787 | 210 |
| OHB 10.250.C | Eye-Hook | 5 P | 10 | 320 | 400 | 55 | 43 | 50 | 40 | 807 | 250 |

<< Overhaul Ball

DIN Hook



| Model Nr. | Type | Hook DIN | WLL (Mtons) | Dimensions (mm) | | | | | | | Weight (kg) |
|----------------|----------|-------------|----------------|-----------------|-----|----|----|----|----|------|----------------|
| | | | | A | B | O | Q | R | T | TL | |
| OHB 12,5.045.C | Eye-Hook | 5 P | 12,5 | 170 | 190 | 55 | 52 | 60 | 45 | 663 | 45 |
| OHB 12,5.210.C | Eye-Hook | 5 P | 12,5 | 300 | 355 | 55 | 52 | 60 | 45 | 807 | 210 |
| OHB 12,5.250.C | Eye-Hook | 5 P | 12,5 | 320 | 400 | 55 | 52 | 60 | 45 | 827 | 250 |
| OHB 12,5.350.C | Eye-Hook | 5 P | 12,5 | 350 | 450 | 55 | 52 | 60 | 45 | 877 | 350 |
| OHB 16.050.C | Eye-Hook | 6 P | 16 | 170 | 190 | 59 | 59 | 70 | 50 | 723 | 50 |
| OHB 16.250.C | Eye-Hook | 6 P | 16 | 320 | 400 | 59 | 59 | 70 | 50 | 934 | 250 |
| OHB 16.350.C | Eye-Hook | 6 P | 16 | 350 | 450 | 59 | 59 | 70 | 50 | 984 | 350 |
| OHB 16.500.C | Eye-Hook | 6 P | 16 | 410 | 500 | 59 | 59 | 70 | 50 | 1034 | 500 |
| OHB 20.350.C | Eye-Hook | 8 P | 20 | 350 | 450 | 69 | 65 | 75 | 60 | 1022 | 350 |
| OHB 20.500.C | Eye-Hook | 8 P | 20 | 410 | 500 | 69 | 65 | 75 | 60 | 1072 | 500 |
| OHB 20.650.C | Eye-Hook | 8 P | 20 | 430 | 550 | 69 | 65 | 75 | 60 | 1122 | 650 |

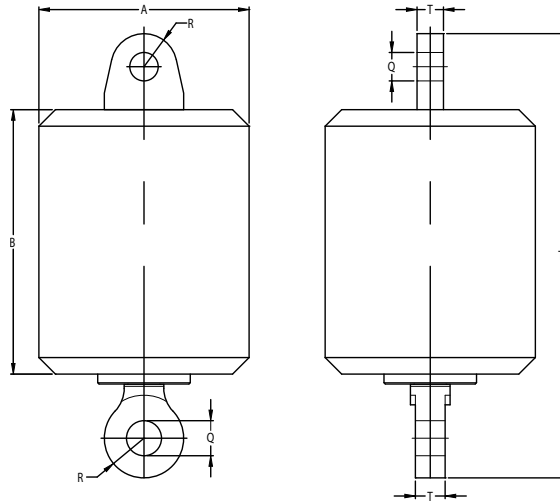
Minimum Ultimate Strength = 4 x WLL.

Ball Swivel with roller thrust bearing, grease lubricated.
 Ball swivel for higher WLL and of higher weights available on request.
 Hole can be made larger on request.
 Standard painted in yellow (no striping).
 On request, swivels can be made suitable for subsea use.



Overhaul Ball Swivel

Eye-eye



| Model Nr. | Type | WLL (Mtons) | Dimensions (mm) | | | | | | Weight (kg) |
|----------------|---------|-------------|-----------------|-----|-----|-----|-----|------|-------------|
| | | | A | B | Q | R | T | TL | |
| OHB 3,2.20.C | Eye-eye | 3,2 | 145 | 145 | 27 | 30 | 22 | 300 | 20 |
| OHB 5.20 | Eye-eye | 5 | 145 | 145 | 32 | 35 | 28 | 320 | 20 |
| OHB 5.40 | Eye-eye | 5 | 170 | 190 | 32 | 35 | 28 | 365 | 40 |
| OHB 8.40 | Eye-eye | 8 | 170 | 190 | 37 | 45 | 35 | 405 | 40 |
| OHB 10.45 | Eye-eye | 10 | 170 | 190 | 43 | 50 | 40 | 435 | 45 |
| OHB 12,5.45.C | Eye-eye | 12,5 | 170 | 190 | 52 | 60 | 45 | 475 | 45 |
| OHB 16.50 | Eye-eye | 16 | 170 | 190 | 59 | 70 | 50 | 525 | 50 |
| OHB 20.105 | Eye-eye | 20 | 250 | 265 | 65 | 75 | 60 | 630 | 105 |
| OHB 25.110 | Eye-eye | 25 | 250 | 265 | 72 | 80 | 70 | 660 | 110 |
| OHB 35.125.C | Eye-eye | 35 | 250 | 265 | 79 | 90 | 70 | 685 | 125 |
| OHB 55.140 | Eye-eye | 55 | 250 | 265 | 92 | 105 | 80 | 760 | 140 |
| OHB 70.200 | Eye-eye | 70 | 300 | 330 | 98 | 120 | 90 | 885 | 200 |
| OHB 85.225 | Eye-eye | 85 | 300 | 330 | 111 | 135 | 100 | 965 | 225 |
| OHB 120.500 | Eye-eye | 120 | 380 | 430 | 100 | 125 | 130 | 1020 | 500 |
| OHB 150.600 | Eye-eye | 150 | 400 | 450 | 115 | 140 | 150 | 1110 | 600 |
| OHB 200.800 | Eye-eye | 200 | 460 | 480 | 140 | 170 | 160 | 1265 | 800 |
| OHB 250.1000 | Eye-eye | 250 | 500 | 600 | 150 | 185 | 180 | 1455 | 1000 |
| OHB 300.1500.C | Eye-eye | 300 | 580 | 670 | 160 | 200 | 190 | 1590 | 1500 |

Minimum Ultimate Strength = 4 x WLL.

Ball Swivel with roller thrust bearing, grease lubricated.
 Ball swivel for higher WLL and of higher weights available on request.
 Hole can be made larger on request.
 Standard painted in yellow (no striping).
 On request, swivels can be made suitable for subsea use.



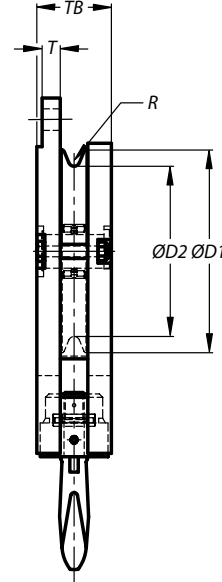
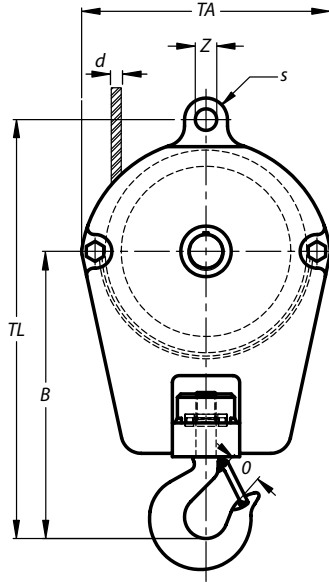
More Overhaul Balls

Looking for a custom solution for your lifting specific application; our dedicated group of in-house engineers will work hard to find an adequate and qualified one!

Contact us and become 'Hooked on Ropeblock'



Single Action Hook



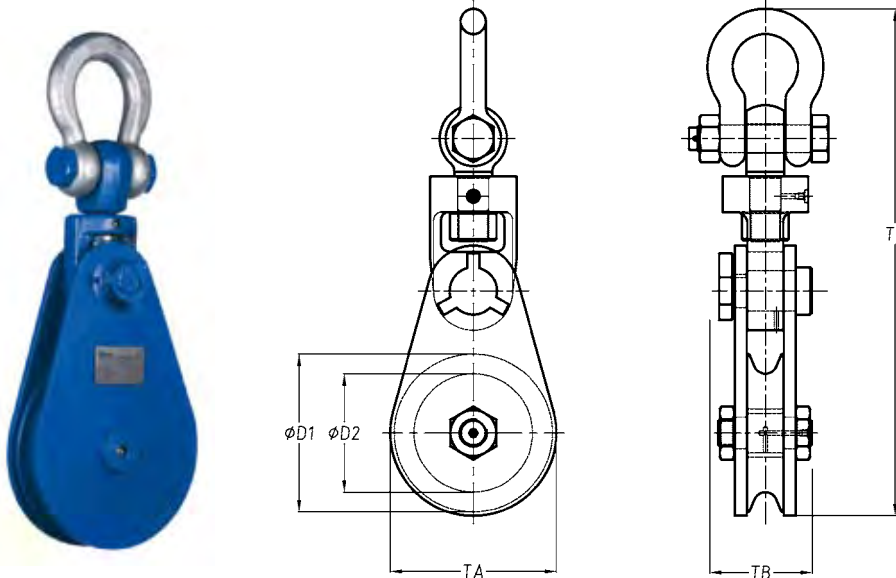
| Stock No. | WLL (Mtons) | For wire $\varnothing d$ | Dimensions (mm) | | | | | | | | | | | Weight (kg) |
|-----------------|-------------|--------------------------|-----------------|-----|-----|----|-----|------|-----|-----|------|----|----|-------------|
| | | | D1 | D2 | B | O | R | S | TA | TB | TL | T | Z | |
| 21.250.05.11 | 5 | 11 | 250 | 210 | 346 | 34 | 6 | 25 | 320 | 115 | 546 | 20 | 25 | 41 |
| 21.260.05.11-13 | 5 | 13 | 260 | 221 | 348 | 34 | 7 | 27 | 330 | 109 | 517 | 20 | 27 | 67 |
| 21.260.08.11-14 | 8 | 14 | 260 | 218 | 390 | 43 | 7.5 | 32 | 330 | 121 | 565 | 27 | 32 | 80 |
| 21.260.10.11-14 | 10 | 14 | 260 | 218 | 425 | 52 | 7.5 | 32 | 330 | 131 | 600 | 27 | 32 | 90 |
| 21.300.08.11 | 8 | 13 | 300 | 255 | 451 | 43 | 7 | 32.5 | 410 | 146 | 651 | 30 | 33 | 80 |
| 21.300.08.11-16 | 8 | 16 | 300 | 252 | 420 | 43 | 8.5 | 32 | 370 | 110 | 695 | 27 | 32 | 95 |
| 21.300.10.11-16 | 10 | 16 | 300 | 252 | 455 | 52 | 8.5 | 32 | 370 | 120 | 740 | 27 | 32 | 100 |
| 21.350.10.11 | 10 | 16 | 350 | 305 | 499 | 52 | 8.5 | 32.5 | 460 | 146 | 744 | 30 | 33 | 125 |
| 21.400.12.11 | 12 | 18 | 400 | 345 | 554 | 57 | 9.5 | 37.5 | 510 | 166 | 834 | 35 | 39 | 150 |
| 21.450.16.11 | 16 | 20 | 450 | 390 | 589 | 57 | 11 | 47.5 | 560 | 179 | 914 | 35 | 45 | 175 |
| 21.500.20.11 | 20 | 22 | 500 | 430 | 682 | 76 | 12 | 47.5 | 610 | 199 | 1032 | 40 | 45 | 260 |

Minimum Ultimate Strength = 4 x WLL.

Standard fitted with becket, cylindrical roller bearing and wire rope guiding device.
 Standard painted in yellow (no striping).
 Standard fitted with only the hook swivelling, incl. safety latch and cotter pin.
 Groove in sheave can be adjusted to other wire rope diameters.

Snatch Blocks with Shackle

S series



| Stock No. | WLL (Mtons) | For wire ϕ d | | Dimensions (mm) | | | | | Bearing type | Weight (kg) |
|--------------|-------------|-------------------|--------------------------------|-----------------|-----|-----|-----|------|--------------|-------------|
| | | (mm) | (inch) | D1 | D2 | TA | TB | TC | | |
| 12.103.02.15 | 2 | 7-9 | $\frac{9}{32} - \frac{3}{8}$ | 75 | 60 | 82 | 70 | 286 | BB | 4 |
| 12.104.04.15 | 4 | 10-12 | $\frac{3}{8} - \frac{1}{2}$ | 115 | 90 | 120 | 70 | 345 | BB | 6 |
| 12.106.04.15 | 4 | 16-19 | $\frac{5}{8} - \frac{3}{4}$ | 150 | 120 | 160 | 70 | 399 | BB | 14 |
| 12.106.08.15 | 8 | 19-22 | $\frac{3}{4} - \frac{7}{8}$ | 150 | 120 | 160 | 93 | 475 | RB | 15 |
| 12.108.08.15 | 8 | 19-22 | $\frac{3}{4} - \frac{7}{8}$ | 200 | 165 | 210 | 93 | 528 | RB | 16 |
| 12.110.10.15 | 10 | 24-26 | 1 | 250 | 205 | 260 | 115 | 679 | RB | 38 |
| 12.110.12.15 | 12 | 24-26 | 1 | 250 | 205 | 260 | 115 | 679 | RB | 42 |
| 12.112.12.15 | 12 | 24-26 | 1 | 300 | 255 | 310 | 133 | 767 | RB | 56 |
| 12.108.15.15 | 15 | 22-24 | $\frac{7}{8} - \frac{15}{16}$ | 200 | 160 | 210 | 102 | 663 | RB | 24 |
| 12.112.15.15 | 15 | 24-26 | 1 | 300 | 255 | 310 | 133 | 884 | RB | 65 |
| 12.114.22.15 | 22 | 28-32 | $1\frac{1}{8} - 1\frac{1}{4}$ | 355 | 300 | 365 | 140 | 952 | RB | 90 |
| 12.116.22.15 | 22 | 28-32 | $1\frac{1}{8} - 1\frac{1}{4}$ | 400 | 350 | 415 | 140 | 1019 | RB | 108 |
| 12.118.22.15 | 22 | 28-32 | $1\frac{1}{8} - 1\frac{1}{4}$ | 450 | 380 | 465 | 180 | 1088 | RB | 120 |
| 12.112.30.15 | 30 | 28-30 | $1\frac{1}{8} - 1\frac{3}{16}$ | 300 | 245 | 310 | 193 | 1023 | RB | 125 |
| 12.116.30.15 | 30 | 32-35 | $1\frac{1}{4} - 1\frac{3}{8}$ | 400 | 300 | 415 | 155 | 1126 | RB | 135 |
| 12.120.30.15 | 30 | 32-35 | $1\frac{1}{4} - 1\frac{3}{8}$ | 500 | 440 | 514 | 162 | 1256 | RB | 210 |
| 12.114.35.15 | 35 | 32-35 | $1\frac{1}{4} - 1\frac{3}{8}$ | 350 | 280 | 365 | 193 | 1058 | RB | 130 |
| 12.124.50.15 | 50 | 46-50 | $1\frac{13}{16} - 2$ | 600 | 500 | 625 | 275 | 1525 | RB | 418 |

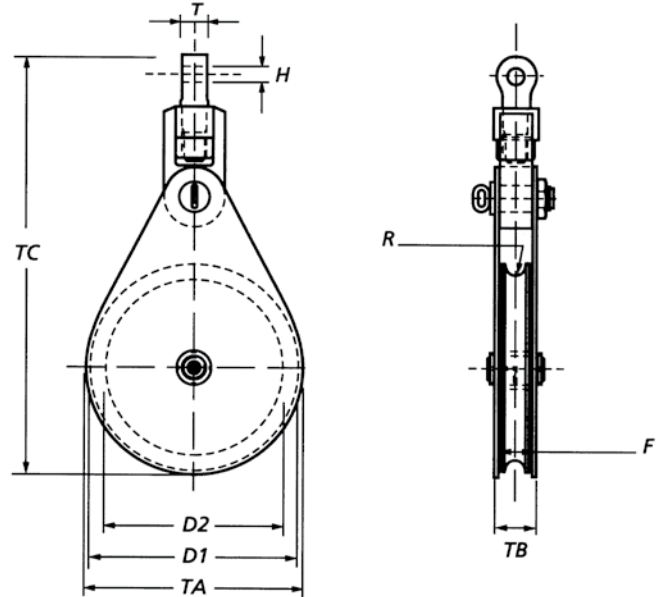
Minimum Ultimate Strength = 4 x WLL.

WLL = Working Load Limit on head fitting.
 RB = Roller bearing.
 BB = Bronze brushing.



Snatch Blocks



HL series



| Stock No. | WLL (Mtons) | For wire ϕ d | Bearing type | Dimensions (mm) | | | | | | | | | Weight (kg) |
|--------------|-------------|-------------------|--------------|-----------------|-----|----|----|------|----|-----|-----|------|-------------|
| | | | | D1 | D2 | F | H | R | T | TA | TB | TC | |
| 12.008.20.03 | 20 | 26-28 | RB | 200 | 150 | 70 | 52 | 14.5 | 70 | 212 | 96 | 751 | 70 |
| 12.008.20.13 | 20 | 26-28 | BB | 200 | 150 | 70 | 52 | 14.5 | 70 | 212 | 96 | 751 | 70 |
| 12.010.20.03 | 20 | 26-28 | RB | 250 | 190 | 70 | 52 | 14.5 | 70 | 262 | 96 | 801 | 81 |
| 12.010.20.13 | 20 | 26-28 | BB | 250 | 190 | 70 | 52 | 14.5 | 70 | 262 | 96 | 801 | 81 |
| 12.012.20.03 | 20 | 26-28 | RB | 300 | 240 | 70 | 52 | 14.5 | 70 | 312 | 96 | 851 | 95 |
| 12.012.20.13 | 20 | 26-28 | BB | 300 | 240 | 70 | 52 | 14.5 | 70 | 312 | 96 | 851 | 95 |
| 12.014.20.03 | 20 | 26-28 | RB | 350 | 290 | 70 | 52 | 14.5 | 70 | 362 | 96 | 901 | 100 |
| 12.014.20.13 | 20 | 26-28 | BB | 350 | 290 | 70 | 52 | 14.5 | 70 | 362 | 96 | 901 | 100 |
| 12.016.20.03 | 20 | 26-28 | RB | 400 | 340 | 70 | 52 | 14.5 | 70 | 412 | 96 | 951 | 110 |
| 12.016.20.13 | 20 | 26-28 | BB | 400 | 340 | 70 | 52 | 14.5 | 70 | 412 | 96 | 951 | 110 |
| 12.018.30.03 | 30 | 28-32 | RB | 450 | 390 | 80 | 60 | 16.5 | 80 | 462 | 112 | 1121 | 155 |
| 12.018.30.13 | 30 | 28-32 | BB | 450 | 390 | 80 | 60 | 16.5 | 80 | 462 | 112 | 1121 | 155 |
| 12.020.30.03 | 30 | 28-32 | RB | 500 | 430 | 80 | 60 | 16.5 | 80 | 512 | 112 | 1171 | 180 |
| 12.020.30.13 | 30 | 28-32 | BB | 500 | 430 | 80 | 60 | 16.5 | 80 | 512 | 112 | 1171 | 180 |
| 12.024.30.03 | 30 | 28-32 | RB | 600 | 520 | 80 | 60 | 16.5 | 80 | 612 | 112 | 1271 | 250 |
| 12.024.30.13 | 30 | 28-32 | BB | 600 | 520 | 80 | 60 | 16.5 | 80 | 612 | 112 | 1271 | 250 |

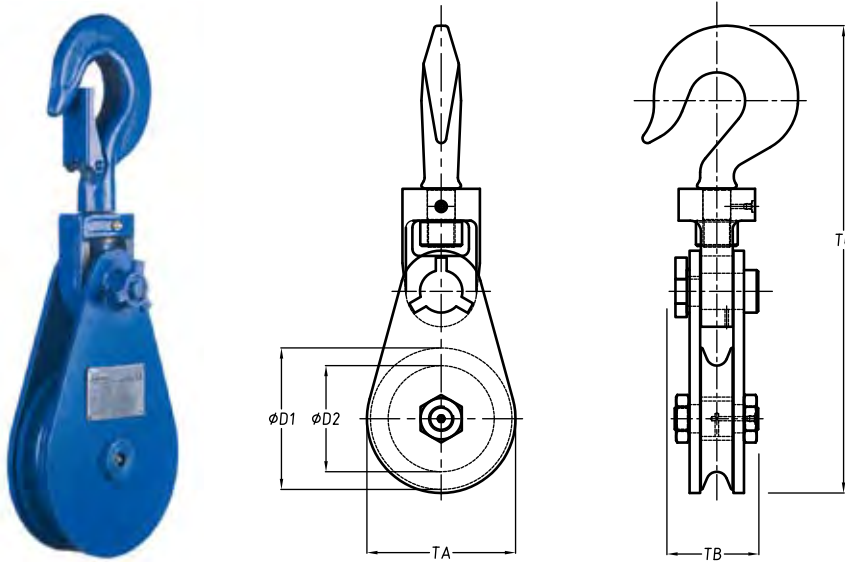
Minimum Ultimate Strength = 4 x WLL.

WLL = Working Load Limit on head fitting.
 RB = Roller bearing.
 BB = Bronze brushing.
 Groove in sheave may be adjusted to other wire rope diameters.

Can also be delivered with:  or: 

Snatch blocks with Hook

S series



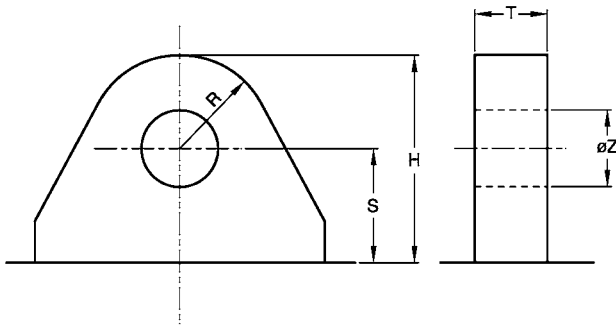
| Stock No. | WLL (Mtons) | For wire ϕ d | | Dimensions (mm) | | | | | Bearing type | Weight (kg) |
|--------------|-------------|-------------------|--------------------------------|-----------------|-----|-----|-----|------|--------------|-------------|
| | | (mm) | (inch) | D1 | D2 | TA | TB | TC | | |
| 12.103.02.14 | 2 | 7-9 | $\frac{9}{32} - \frac{3}{8}$ | 75 | 60 | 82 | 70 | 292 | BB | 4 |
| 12.104.04.14 | 4 | 10-12 | $\frac{3}{8} - \frac{1}{2}$ | 115 | 90 | 120 | 70 | 358 | BB | 6 |
| 12.106.04.14 | 4 | 16-19 | $\frac{5}{8} - \frac{3}{4}$ | 150 | 120 | 160 | 70 | 412 | BB | 14 |
| 12.106.08.14 | 8 | 19-22 | $\frac{3}{4} - \frac{7}{8}$ | 150 | 120 | 160 | 93 | 498 | RB | 15 |
| 12.108.08.14 | 8 | 19-22 | $\frac{3}{4} - \frac{7}{8}$ | 200 | 165 | 210 | 93 | 549 | RB | 16 |
| 12.110.10.14 | 10 | 24-26 | 1 | 250 | 205 | 260 | 115 | 695 | RB | 38 |
| 12.110.12.14 | 12 | 24-26 | 1 | 250 | 205 | 260 | 115 | 701 | RB | 42 |
| 12.112.12.14 | 12 | 24-26 | 1 | 300 | 255 | 310 | 133 | 797 | RB | 56 |
| 12.108.15.14 | 15 | 22-24 | $\frac{7}{8} - \frac{15}{16}$ | 200 | 160 | 210 | 102 | 672 | RB | 24 |
| 12.112.15.14 | 15 | 24-26 | 1 | 300 | 255 | 310 | 133 | 797 | RB | 65 |
| 12.114.22.14 | 22 | 28-32 | $1\frac{1}{8} - 1\frac{1}{4}$ | 355 | 300 | 365 | 140 | 960 | RB | 90 |
| 12.116.22.14 | 22 | 28-32 | $1\frac{1}{8} - 1\frac{1}{4}$ | 400 | 350 | 415 | 140 | 1027 | RB | 108 |
| 12.118.22.14 | 22 | 28-32 | $1\frac{1}{8} - 1\frac{1}{4}$ | 450 | 380 | 465 | 180 | 1058 | RB | 120 |
| 12.112.30.14 | 30 | 28-30 | $1\frac{1}{8} - 1\frac{3}{16}$ | 300 | 245 | 310 | 193 | 993 | RB | 125 |
| 12.116.30.14 | 30 | 32-35 | $1\frac{1}{4} - 1\frac{3}{8}$ | 400 | 300 | 415 | 155 | 1085 | RB | 135 |
| 12.120.30.14 | 30 | 32-35 | $1\frac{1}{4} - 1\frac{3}{8}$ | 500 | 440 | 514 | 162 | 1177 | RB | 210 |
| 12.114.35.14 | 35 | 32-35 | $1\frac{1}{4} - 1\frac{3}{8}$ | 350 | 280 | 365 | 193 | 1028 | RB | 130 |
| 12.124.50.14 | 50 | 46-50 | $1\frac{13}{16} - 2$ | 600 | 500 | 625 | 275 | 1495 | RB | 418 |

Minimum Ultimate Strength = 4 x WLL.

WLL = Working Load Limit on head fitting.
 RB = Roller bearing.
 BB = Bronze brushing.

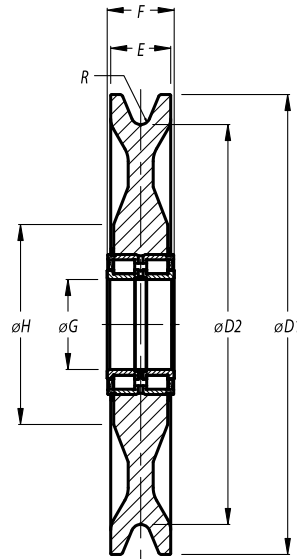


Beckets for Crane Blocks



| Bucket No. | øZ (mm) | T (mm) | S (mm) | R (mm) | H (mm) |
|------------|------------|-----------|-----------|-----------|-----------|
| 1 | 27 | 22 | 40 | 30 | 70 |
| 2 | 32 | 28 | 50 | 35 | 85 |
| 3 | 37 | 35 | 55 | 45 | 100 |
| 4 | 43 | 40 | 65 | 50 | 115 |
| 5 | 52 | 45 | 75 | 60 | 135 |
| 6 | 59 | 50 | 90 | 70 | 160 |
| 7 | 65 | 60 | 100 | 75 | 175 |

Sheaves Nylon / Polyamid with cylindrical roller bearings

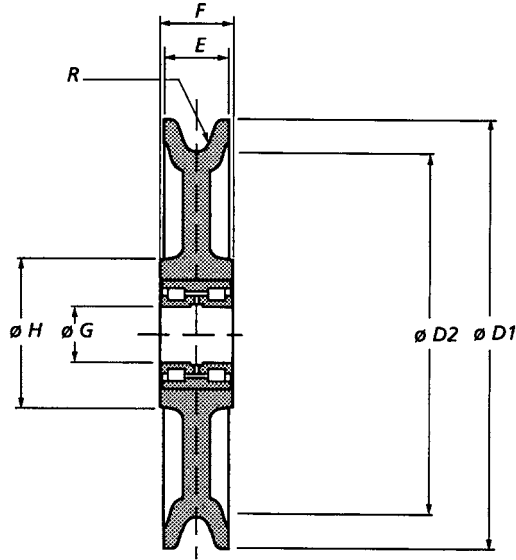


| Model Nr. | For wire ø d | Dimensions (mm) | | | | | | | Bearing type | Material | Weight (kg) |
|--------------------|-----------------|-----------------|-----|----|----|-----|-----|------|-----------------|----------|----------------|
| | | D1 | D2 | E | F | G | H | R | | | |
| SE 260.5010.7.K | 12 | 300 | 260 | 34 | 40 | 50 | 95 | 7.0 | SL04 5010 | PA 6G | 2.86 |
| SE 285.5012.7.K | 12 | 325 | 285 | 34 | 46 | 60 | - | 7.0 | SL04 5012 | PA 6G | 3.86 |
| SE 352.5013.8.5.K | 16 | 400 | 352 | 42 | 46 | 65 | 185 | 8.5 | SL04 5013 | PA 6G | 5.63 |
| SE 352.5016.8.5.K | 16 | 400 | 352 | 50 | 60 | 80 | 185 | 8.5 | SL04 5016 | PA 6G | 7.61 |
| SE 400.5018.9.5.K | 18 | 460 | 400 | 60 | 67 | 90 | 200 | 9.5 | SL04 5018 | PA 6G | 10.81 |
| SE 400.5024.9.5.K | 18 | 460 | 400 | 72 | 80 | 120 | 225 | 9.5 | SL04 5024 | PA 6G | 14.04 |
| SE 482.5018.11.5.K | 21 | 560 | 482 | 62 | 67 | 90 | 255 | 11.4 | SL04 5018 | PA 6G | 14.01 |
| SE 482.5024.11.5.K | 21 | 560 | 482 | 72 | 80 | 120 | 255 | 11.4 | SL04 5024 | PA 6G | 17.54 |
| SE 482.160.11.4.K | 21 | 560 | 482 | 72 | 80 | 160 | 262 | 11.4 | SL04 160 | PA 6G | 17.2 |
| SE 528.5018.12.K | 22 | 596 | 528 | 60 | 67 | 90 | 220 | 12.0 | SL04 5018 | PA 6G | 15.01 |
| SE 528.5024.13.K | 24 | 596 | 528 | 72 | 80 | 120 | 255 | 13.0 | SL04 5024 | PA 6G | 21.14 |
| SE 528.160.13.K | 24 | 596 | 528 | 72 | 80 | 160 | 262 | 13.0 | SL04 160 | PA 6G | 21.9 |

Other sizes possible.
Groove may be adjusted to other wire rope diameters.



Cast Sheaves with cylindrical roller bearings



| Model Nr. | For wire $\varnothing d$ | Dimensions (mm) | | | | | | | Bearing type | Material | Weight (kg) |
|------------------|-----------------------------|-----------------|-----|----|-------|----|-----|------|-----------------|----------|----------------|
| | | D1 | D2 | E | F | G | H | R | | | |
| 31.150.70.03 | 12 | 150 | 120 | 36 | 40/34 | 30 | 80 | 6.5 | SL04 5006 | GGG-60 | 3 |
| 31.200.70.03 | 14 | 200 | 165 | 36 | 40/34 | 30 | 80 | 7.5 | SL04 5006 | GGG-60 | 4.5 |
| 31.250.70.03 | 18 | 250 | 210 | 40 | 45/36 | 35 | 90 | 9.5 | SL04 5007 | GGG-60 | 8 |
| 31.300.70.03 | 20 | 300 | 255 | 45 | 50/38 | 40 | 100 | 11 | SL04 5008 | GGG-70 | 12 |
| SE 280.5010.7 | 13 | 320 | 280 | 36 | 40 | 50 | 140 | 7 | SL04 5010 | GGG-50 | 8.5 |
| SE 280.5012.7 | 13 | 320 | 280 | 38 | 46 | 60 | 140 | 7 | SL04 5012 | GGG-50 | 9.2 |
| SE 285.5012.8.5 | 16 | 320 | 285 | 38 | 46 | 60 | 140 | 8.5 | SL04 5012 | GGG-50 | 9.3 |
| 31.350.70.03 | 22 | 350 | 305 | 45 | 50/40 | 45 | 115 | 12 | SL04 5009 | GGG-70 | 17 |
| SE 320.5013.9 | 16 | 365 | 320 | 42 | 46 | 65 | 160 | 9 | SL04 5013 | GGG-50 | 13.3 |
| 31.400.70.03 | 24 | 400 | 345 | 55 | 60/40 | 50 | 140 | 13 | SL04 5010 | GGG-70 | 24 |
| SE 355.5013.8.5 | 16 | 410 | 355 | 42 | 46 | 65 | 160 | 8.5 | SL04 5013 | GGG-50 | 16.3 |
| SE 355.5018.9 | 17 | 410 | 355 | 42 | 67 | 90 | 160 | 9 | SL04 5018 | GGG-50 | 20.4 |
| SE 360.5016.9.5 | 18 | 420 | 360 | 50 | 60 | 80 | 160 | 9.5 | SL04 5016 | GGG-50 | 23.7 |
| 31.450.70.03 | 28 | 450 | 390 | 60 | 70/46 | 55 | 140 | 15 | SL04 5011 | GGG-70 | 48 |
| SE 400.5013.9.5 | 18 | 460 | 400 | 42 | 46 | 65 | 175 | 9.5 | SL04 5013 | GGG-50 | 22.3 |
| SE 400.5014.9.5 | 18 | 460 | 400 | 48 | 54 | 70 | 175 | 9.5 | SL04 5014 | GGG-50 | 21.8 |
| SE 400.5016.11.5 | 22 | 460 | 400 | 50 | 60 | 80 | 200 | 11.5 | SL04 5016 | GGG-50 | 22.7 |
| SE 410.5018.11.5 | 22 | 460 | 400 | 61 | 67 | 90 | 200 | 11.5 | SL04 5018 | GGG-50 | 23.7 |
| SE 410.5013.9 | 17 | 460 | 410 | 42 | 46 | 65 | 200 | 9 | SL04 5013 | GGG-50 | 22.3 |

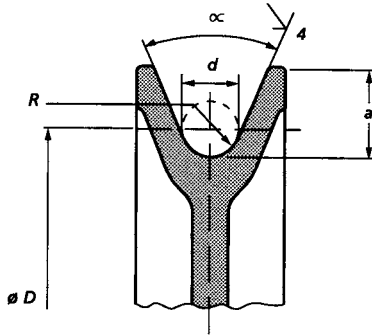
<< Cast Sheaves with cylindrical roller bearings

| Model Nr. | For wire ø d | Dimensions (mm) | | | | | | | Bearing type | Material | Weight (kg) |
|------------------|-----------------|-----------------|-----|-----|--------|-----|-----|------|-----------------|----------|----------------|
| | | D1 | D2 | E | F | G | H | R | | | |
| SE 410.5018.9 | 17 | 460 | 410 | 61 | 67 | 90 | 200 | 9 | SL04 5018 | GGG-50 | 24.7 |
| 31.500.70.03 | 30 | 500 | 430 | 70 | 80/46 | 60 | 150 | 16 | SL04 5012 | GGG-70 | 44 |
| SE 450.5018.10 | 19 | 515 | 450 | 61 | 67 | 90 | 200 | 10 | SL04 5018 | GGG-50 | 39.7 |
| SE 450.5018.11.5 | 20 | 515 | 450 | 61 | 67 | 90 | 200 | 11.5 | SL04 5018 | GGG-50 | 39.7 |
| SE 450.5024.10 | 19 | 515 | 450 | 70 | 80 | 12 | 270 | 10 | SL04 5024 | GGG-50 | 45 |
| 31.550.70.03 | 34 | 550 | 480 | 70 | 80/54 | 70 | 170 | 18 | SL04 5014 | GGG-70 | 55 |
| SE 482.5018.11 | 20 | 560 | 482 | 62 | 67 | 90 | 200 | 11 | SL04 5018 | GGG-50 | 38.7 |
| SE 500.5018.13.5 | 25 | 570 | 500 | 59 | 67 | 90 | 200 | 13.5 | SL04 5018 | GGG-50 | 38.7 |
| SE 528.5018.13 | 24 | 595 | 528 | 61 | 67 | 90 | 200 | 13 | SL04 5018 | GGG-50 | 48.7 |
| SE 528.5024.13.5 | 25 | 595 | 528 | 75 | 80 | 120 | 270 | 13.5 | SL04 5024 | GGG-50 | 55.2 |
| 31.600.70.03 | 36 | 600 | 520 | 85 | 105/60 | 80 | 190 | 19 | SL04 5016 | GGG-70 | 80 |
| SE 575.5022.14 | 27 | 650 | 575 | 75 | 80 | 100 | 280 | 14 | SL04 5022 | GGG-50 | 55.5 |
| SE 575.5024.14 | 27 | 650 | 575 | 72 | 80 | 120 | 280 | 14 | SL04 5024 | GGG-50 | 64 |
| 31.665.70.03 | 38 | 665 | 560 | 100 | 110 | 100 | 210 | 20.5 | SL04 5020 | GGG-70 | 110 |
| SE 630.5022.16 | 30 | 710 | 630 | 70 | 80 | 110 | 230 | 16 | SL04 5022 | GGG-50 | 66.5 |
| SE 630.5024.17 | 32 | 710 | 630 | 70 | 80 | 120 | 230 | 17 | SL04 5024 | GGG-50 | 92 |
| 31.710.70.03 | 40 | 710 | 630 | 85 | 110/80 | 120 | 260 | 21.5 | SL04 5024 | GGG-70 | 125 |
| SE 710.5022.18 | 36 | 800 | 710 | 72 | 80 | 110 | 230 | 18 | SL04 5022 | GGG-50 | 86.5 |
| SE 710.5024.20 | 38 | 800 | 710 | 72 | 80 | 120 | 230 | 20 | SL04 5024 | GGG-50 | 87 |
| SE 710.5026.18 | 36 | 800 | 710 | 78 | 95 | 130 | 230 | 18 | SL04 5026 | GGG-50 | 94 |
| 31.810.60.03 | 44 | 810 | 710 | 98 | 100 | 150 | 270 | 23.5 | SL04 5030 | GGG-60 | 190 |
| SE 710.5026.20 | 38 | 860 | 760 | 85 | 95 | 130 | 300 | 20 | SL04 5026 | GGG-50 | 100 |
| SE 710.5030.20 | 38 | 860 | 760 | 85 | 100 | 150 | 300 | 20 | SL04 5030 | GGG-50 | 103 |
| SE 800.5022.16 | 30 | 890 | 800 | 70 | 80 | 110 | 270 | 16 | SL04 5022 | GGG-50 | 102.5 |
| SE 800.5024.16 | 30 | 890 | 800 | 70 | 80 | 120 | 270 | 16 | SL04 5024 | GGG-50 | 103 |
| SE 800.5026.20 | 38 | 890 | 800 | 75 | 95 | 130 | 270 | 20 | SL04 5026 | GGG-50 | 106 |
| SE 800.5030.20 | 38 | 890 | 800 | 85 | 100 | 150 | 270 | 20 | SL04 5030 | GGG-50 | 128 |

Different shaft sizes possible.
Groove may be adjusted to other wire rope diameters.



Groove Radius



| d (mm) | R (mm) |
|-----------|-----------|
| 6 | 3,5 |
| 7 | 4,0 |
| 8 | 4,5 |
| 9 | 5,0 |
| 10 | 5,5 |
| 11 | 6,0 |
| 12 | 6,5 |
| 13 | 7,0 |
| 14 | 7,5 |
| 15 | 8,0 |
| 16 | 8,5 |
| 17 | 9,0 |
| 18 | 9,5 |
| 19 | 10,0 |
| 20 | 10,5 |
| 21 | 11,5 |
| 22 | 12,0 |
| 23 | 12,5 |
| 24 | 13,0 |
| 25 | 13,5 |
| 26 | 14,0 |
| 27 | 14,5 |
| 28 | 15,0 |
| 29 | 15,5 |
| 30 | 16,0 |
| 31 | 16,5 |

| d (mm) | R (mm) |
|-----------|-----------|
| 32 | 17,0 |
| 33 | 17,5 |
| 34 | 18,0 |
| 35 | 18,5 |
| 36 | 19,0 |
| 37 | 19,5 |
| 38 | 20,0 |
| 39 | 20,5 |
| 40 | 21,0 |
| 41 | 22,0 |
| 42 | 22,5 |
| 43 | 23,0 |
| 44 | 23,5 |
| 45 | 24,0 |
| 46 | 24,5 |
| 47 | 25,0 |
| 48 | 25,5 |
| 49 | 26,0 |
| 50 | 26,5 |
| 51 | 27,0 |
| 52 | 27,5 |
| 53 | 28,0 |
| 54 | 29,0 |
| 55 | 29,5 |
| 56 | 30,0 |
| 58 | 31,0 |

d = Wire rope diameter.
R = Radius in Groove.



More Sheaves

Looking for a custom solution for your lifting specific application; our dedicated group of in-house engineers will work hard to find an adequate and qualified one!

Contact us and become 'Hooked on Ropeblock'

Sheaves



High quality and safe components for the worldwide lifting- and wire rope industry

www.ropeblock.com

Crane Blocks
Swivels
Hook Blocks
Sockets
Sheaves

The quality name
for the lifting- and wire rope industry

ROPEBLOCK

www.ropeblock.com

Sockets

The quality name
for the lifting- and wire rope industry

ROPEBLOCK

www.ropeblock.com

Offshore

The quality name
for the lifting- and wire rope industry

ROPEBLOCK

High quality and safe components for the worldwide lifting- and wire rope industry



www.ropelock.com

Marine




The quality name
for the lifting- and wire rope industry




ROPEBLOCK



www.ropelock.com


Mobile Cranes




The quality name
for the lifting- and wire rope industry



ROPEBLOCK



www.ropelock.com

Sheaves




The quality name
for the lifting- and wire rope industry



ROPEBLOCK



www.ropelock.com



ROPEBLOCK

**High quality and safe components
for the worldwide lifting- and wire
rope industry**



Ropeblock BV P.O. Box 391 | 7570 AJ Oldenzaal | The Netherlands
T +31 (0)541 532 300 | F +31 (0)541 536 575 | E sales@ropelock.com



Copyright © 2010. Published by Ropeblock b.v. All rights reserved.

No part of this publication may be reproduced, stored in a retrieval system or transmitted in any form or by any means electronic, mechanical, photocopying, recording or otherwise without the prior written permission of the publisher.

Notice: No responsibility is assumed by the publisher for any injury and/or damage to persons or property as a matter of products liability, negligence, or otherwise, or from any use or operation of any methods, products or ideas obtained in the material herein.

the quality