

- In addition to routine checks for each use, PPE should regularly undergo a detailed inspection by a competent person. Petzl recommends an inspection every 12 months and after any exceptional event in the life of the product.
 - PPE inspection should be conducted with the manufacturer's Instructions for Use.
- Download the instructions at [PETZL.COM](https://www.petzl.com).

FRAME-LOADED ROPE CLAMP



1. Known product history

Any PPE showing unexpected degradation should be quarantined, pending a detailed inspection.

The user should:

- Provide precise information on the usage conditions.
- Report any exceptional event regarding his PPE.

(Examples: fall or fall arrest, use or storage at extreme temperatures, modification outside manufacturer's facilities...).

2. Preliminary observations

Verify the presence and legibility of the serial number and the CE mark.

Attention, the serial number code on our products is evolving. Two types of code will coexist. See below for details on each serial number code.

Code A:

00 000 AA 0000

Year of manufacture
Day of manufacture
Name of Inspector
Incrementation

Code B:

00 A 0000000 000

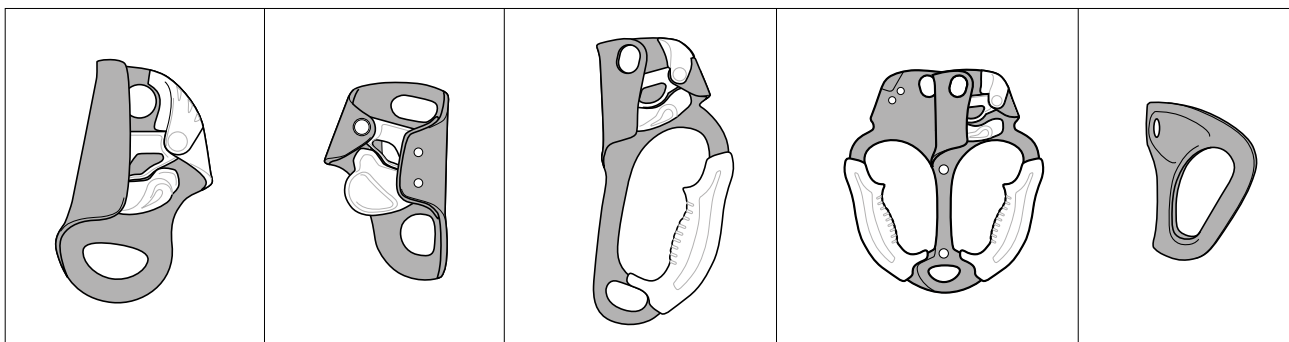
Year of manufacture
Month of manufacture
Batch number
Incrementation

Verify that the product lifetime has not been exceeded.

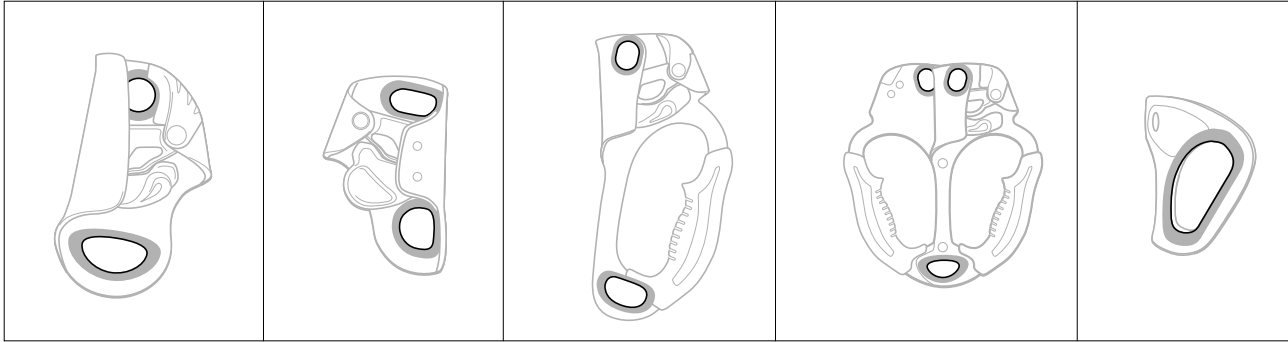
Compare with a new product to verify there are no modifications or missing parts.

3. Checking the condition of the frame

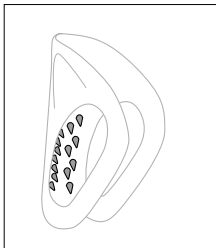
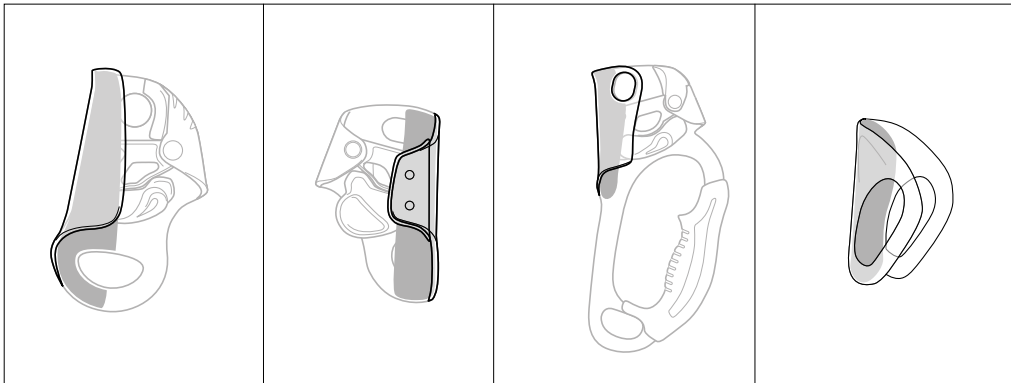
- Check the condition of the frame (marks, wear, cracks, deformation, corrosion...).



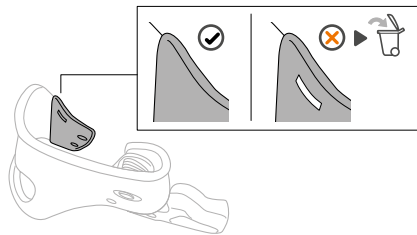
- Check the condition of the attachment holes (marks, deformation, cracks, corrosion...).



- Check for wear caused by rope running through the device.



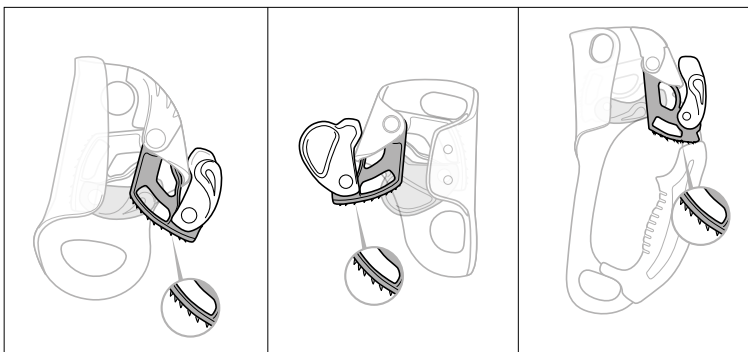
- For the TIBLOC, check that all teeth are present and check their state of wear. The teeth must not be fouled. If necessary, clean them with a brush.



- For CROLLs manufactured after February 2017, check that the wear indicator is not visible.

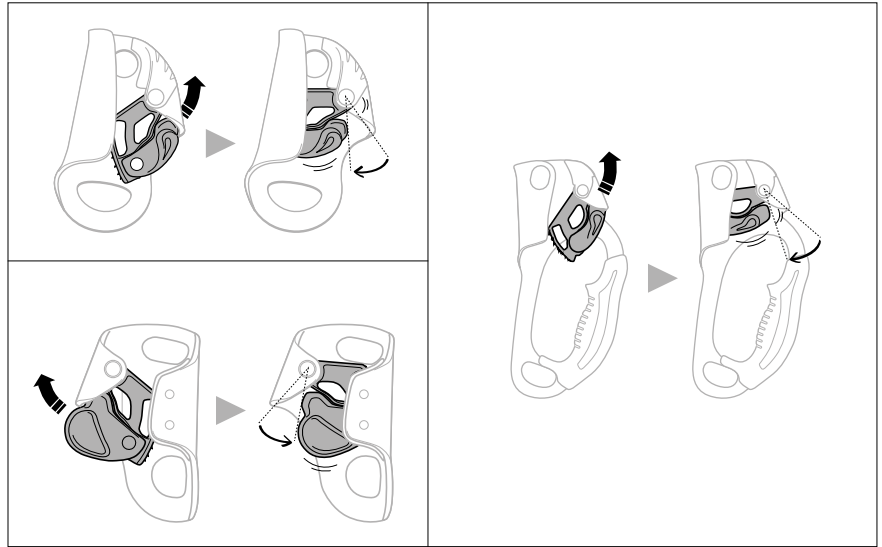
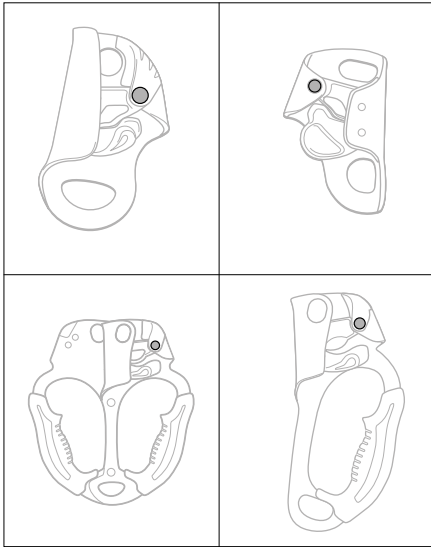
4. Checking the cam (only on BASIC, CROLL, ASCENSION, ASCENTREE)

- Check the condition of the cam (marks, deformation, cracks, corrosion). Check that all teeth are present and check their state of wear. The teeth must not be fouled. If necessary, clean them with a brush.



- Check the condition of the cam axle and rivet (marks, deformation, cracks, corrosion...).

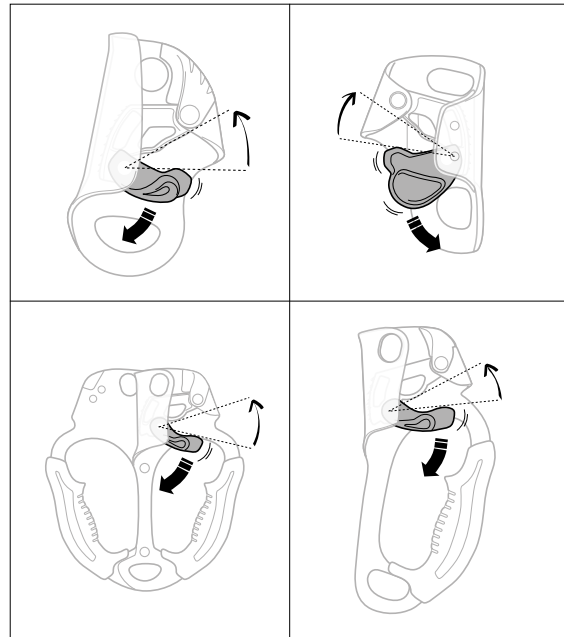
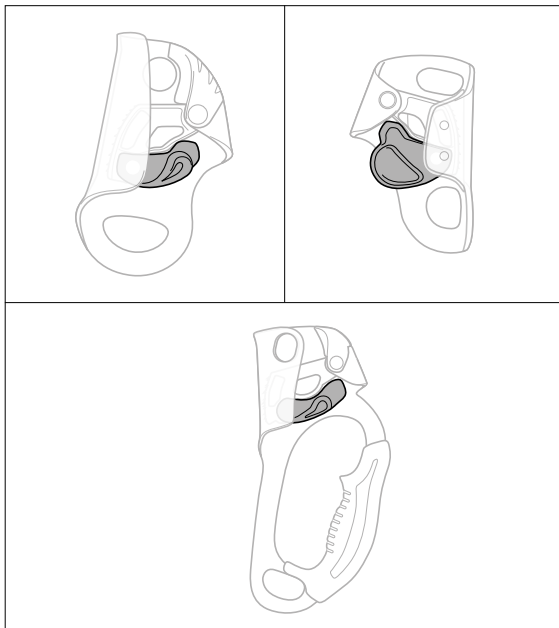
- Check the cam's rotation and the effectiveness of the return spring.



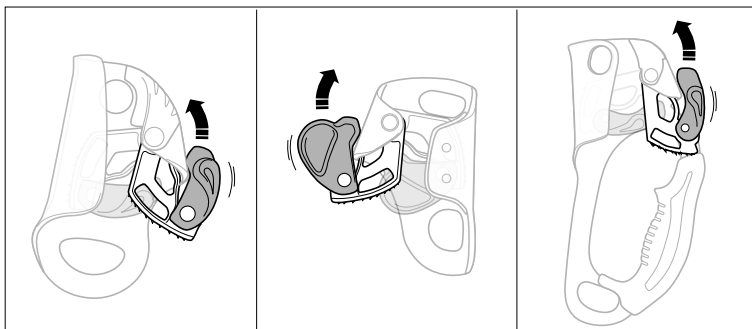
5. Checking the safety catch (only on BASIC, CROLL, ASCENSION, ASCENTREE)

- Check the condition of the safety catch and its axle (marks, deformation, cracks, corrosion...).

- Check the effectiveness of the safety catch return spring.

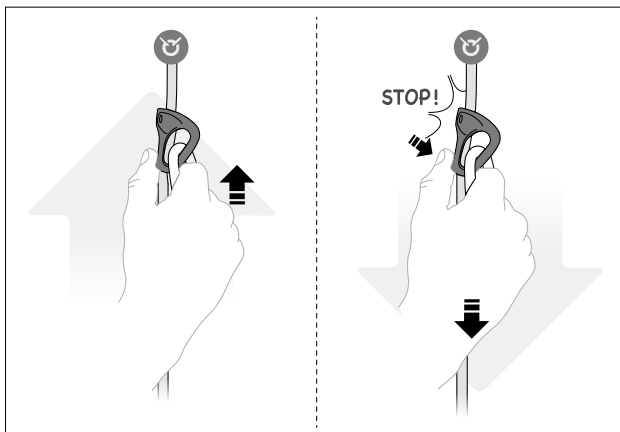
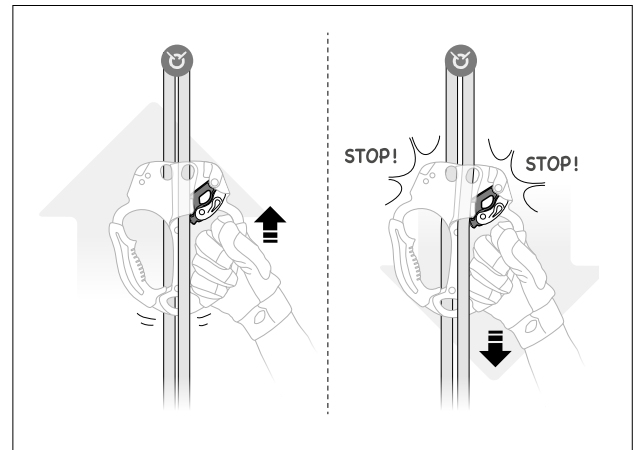
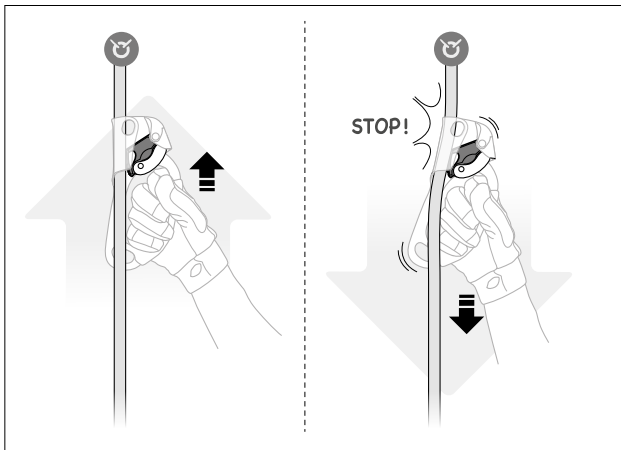
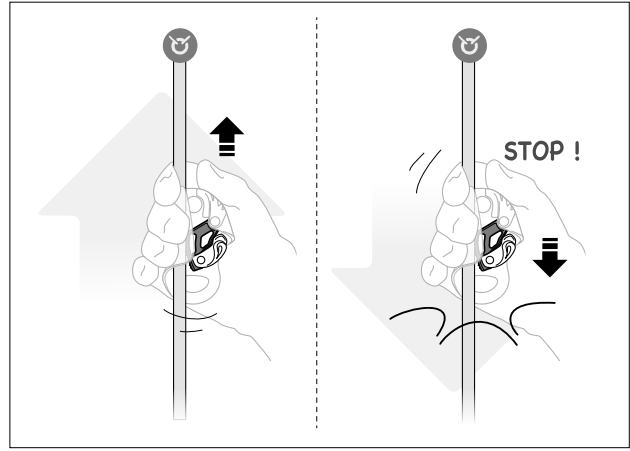
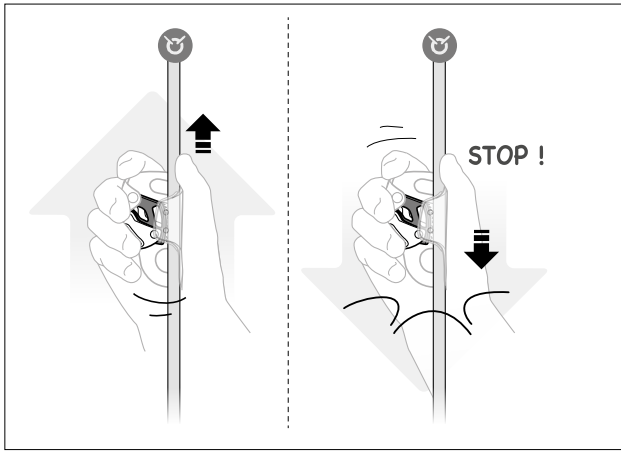


- Verify that the safety catch is able to hold the cam open.



6. Function check

- Verify that the rope clamp slides along the rope in one direction and locks in the other direction.



Appendix 1. Examples of rope clamps that are worn out or that should be retired

• Broken cam



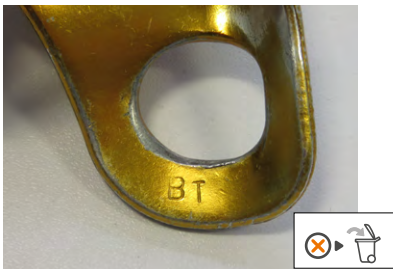
• Cracked cam



• Rusted cam



• Marks on the frame



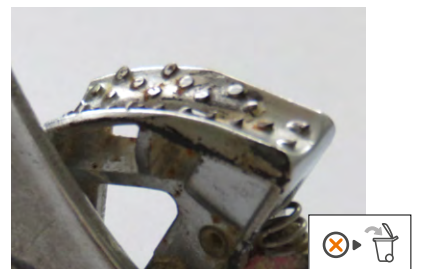
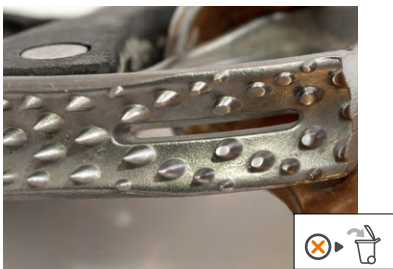
• Cracked frame



• Deformed frame



• Worn-out teeth



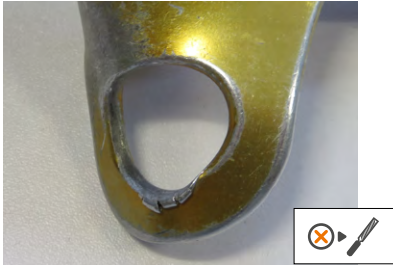
• Wear caused by rope running through the device.



- Visible wear indicator



- Damaged attachment holes



- Dirty product with fouled teeth

